

# SERVICE & PARTS MANUAL



Main Office | 101 Hilltopper Way, Glasgow KY, 42141  
Shipping & Receiving | 725 Roseville Rd, Glasgow KY, 42141

---

(270) 651-9166 | Service & Parts  
spare\_parts@spantechllc.com

[www.spantechconveyors.com](http://www.spantechconveyors.com)



# TABLE OF CONTENTS



## CHAIN | BASIC COMPONENTS - 4

- Basic Components - 5*
- How To Determine Which Chain Rod You Need - 6*
- Chain Rods Stainless Steel - 7*
- Chain Rods Plastic - 9*

## CHAIN TYPES | SUPERTIGHT - 10

- 25mm Supertight Chain - 11-14*
- 50mm Supertight Chain - 15*
- 50mm Pillowtop Chain - 16*
- Accumulation Options - 18*

## CHAIN TYPES | LEGACY CHAIN - 19

- Multispan Chain - 20*
- Monospan - 23*
- Maxispan - 24*

## CHAIN TYPES | SPECIALTY CHAIN - 26

- Closed Top Chain - 27*
- Microspan - 28*
- Minilink & J-Trax Chain - 29*

## BASIC CONVEYOR COMPONENTS - 30

- Wearstrip & Hardware - 31*
- Conveyor Specialty Mounting Hardware - 32*
- Maintenance Kit - 33*
- Spanlube - 34*

## DRIVES & IDLERS | FULL ASSEMBLY

- 25mm Standard Drive & Idler - 36*
- 50mm Standard Drive & Idler - 37*
- Minilink Idler - 38*
- Low Profile Idler - 39*
- Intermediate Drive Components - 40*

## DRIVES & IDLERS | SHAFTS & SPROCKETS - 42

- Maxispan 50mm Sprocket Assembly - 43*
- Multispan Supertight 25mm Sprocket Assembly - 44*
- Multispan Supertight 50mm Sprocket Assembly - 45*
- Minilink 25mm Sprocket Assembly - 46*
- Microspan 1.25" Bore Sprocket Assembly - 47*
- Microspan 1.91" Bore Sprocket Assembly - 48*
- Molded Microspan 20mm Bore Sprocket Assembly - 49*
- Microspan Hex Bore Sprocket Assembly - 50*

## TRANSFER | COMPONENTS - 51

- Microspan Transfer Assembly - 52*
- Microspan Transfer Cover Assembly - 54*
- Microspan Transfer Mount Chasis - 55*

## GEARMOTOR - COMPONENTS - 56

- Nord Gearmotor Assembly - 57*
- Nord Gearmotor Extractors - 58*
- SEW Gearmotor Assembly - 59*
- SEW Gearmotor Extractors - 60*

A large graphic element consisting of a central yellow horizontal bar with a diagonal hatched pattern. This bar is flanked by two larger rectangular areas with a light gray diagonal hatched pattern, one above and one below the yellow bar.

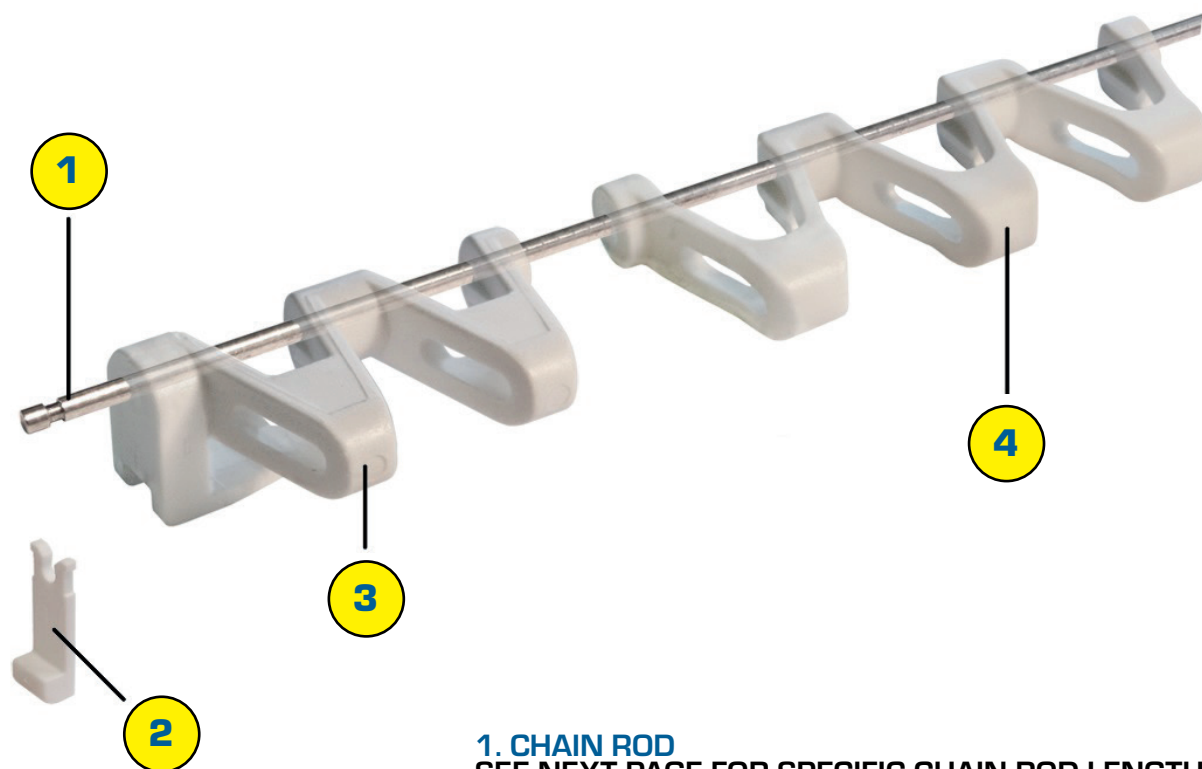
# **CHAIN**

## **[BASIC COMPONENTS]**



# CHAIN BASIC COMPONENTS

KEY: C = CENTER • LH = LEFT HAND • RH = RIGHT HAND • MSG = MOVING SIDE GUIDE • (PU) = POLYURETHANE • (S) = SANTOPRENE  
• (A) = ACETAL • (PP) = POLYPROPYLENE



## 1. CHAIN ROD

SEE NEXT PAGE FOR SPECIFIC CHAIN ROD LENGTHS AND TYPES

## 2. LOCK TAB

DSO140A | MULTISPAN LOCK TAB ACETAL  
DSO220A | MONOSPAN/MAXISPAN LOCK TAB ACETAL

## 3. SIDE LINKS

SEE INDIVIDUAL CHAIN TYPE FOR PART #

## 4. CENTER LINKS






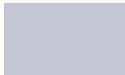
SEE INDIVIDUAL CHAIN TYPE FOR PART #

# HOW TO DETERMINE WHICH CHAIN ROD YOU NEED

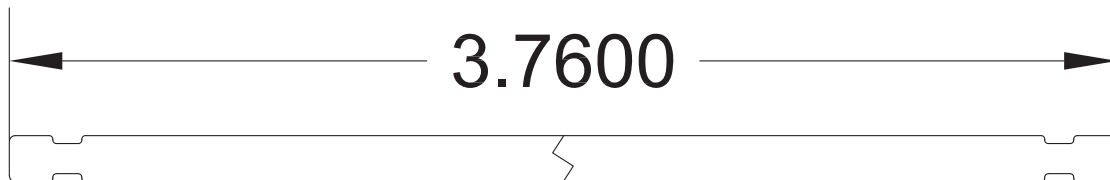
KEY: C = CENTER • LH = LEFT HAND • RH = RIGHT HAND • MSG = MOVING SIDE GUIDE • (PU) = POLYURETHANE • (S) = SANTOPRENE  
• (A) = ACETAL • (PP) = POLYPROPYLENE

## EXAMPLE PART NUMBER EXPLAINED

CCR03764SS01ST

	CCR/UCR/CR (COATED, UNCOATED, CHAIN ROD)
	CHAIN / ROD WIDTH
	ROD DIAMETER
	ROD MATERIAL
	LATEST REVISION #
	ST/SP/P (STANDARD, SPIRAL, OR PLASTIC)

## CHAIN / ROD WIDTH





# STAINLESS STEEL CHAIN RODS

KEY: C = CENTER • LH = LEFT HAND • RH = RIGHT HAND • MSG = MOVING SIDE GUIDE • (PU) = POLYURETHANE • (S) = SANTOPRENE  
• (A) = ACETAL • (PP) = POLYPROPYLENE

CCR03764SS01ST	3.76 4mm STAINLESS COATED CHAIN ROD
CCR04944SS01ST	4.94 4mm STAINLESS COATED CHAIN ROD
CCR06134SS01ST	6.13 4mm STAINLESS COATED CHAIN ROD
CCR07314SS01ST	7.31 4mm STAINLESS COATED CHAIN ROD
CCR08494SS01ST	8.49 4mm STAINLESS COATED CHAIN ROD
CCR09674SS01ST	9.67 4mm STAINLESS COATED CHAIN ROD
CCR10854SS01ST	10.85 4mm STAINLESS COATED CHAIN ROD
CCR12034SS01ST	12.03 4mm STAINLESS COATED CHAIN ROD
CCR13214SS01ST	13.21 4mm STAINLESS COATED CHAIN ROD
CCR14394SS01ST	14.39 4mm STAINLESS COATED CHAIN ROD
CCR15574SS01ST	15.57 4mm STAINLESS COATED CHAIN ROD
CCR16764SS01ST	16.76 4mm STAINLESS COATED CHAIN ROD
CCR17944SS01ST	17.94 4mm STAINLESS COATED CHAIN ROD
CCR19124SS01ST	19.12 4mm STAINLESS COATED CHAIN ROD
CCR20304SS01ST	20.30 4mm STAINLESS COATED CHAIN ROD
CCR21484SS01ST	21.48 4mm STAINLESS COATED CHAIN ROD
CCR22664SS01ST	22.66 4mm STAINLESS COATED CHAIN ROD
CCR23844SS01ST	23.84 4mm STAINLESS COATED CHAIN ROD
CCR25024SS01ST	25.02 4mm STAINLESS COATED CHAIN ROD
CCR26204SS01ST	26.20 4mm STAINLESS COATED CHAIN ROD
CCR27394SS01ST	27.39 4mm STAINLESS COATED CHAIN ROD
CCR28574SS01ST	28.57 4mm STAINLESS COATED CHAIN ROD
CCR29754SS01ST	29.75 4mm STAINLESS COATED CHAIN ROD
CCR30934SS01ST	30.93 4mm STAINLESS COATED CHAIN ROD
CCR32114SS01ST	32.11 4mm STAINLESS COATED CHAIN ROD
CCR33294SS01ST	33.29 4mm STAINLESS COATED CHAIN ROD
CCR34474SS01ST	34.47 4mm STAINLESS COATED CHAIN ROD
CCR35654SS01ST	35.65 4mm STAINLESS COATED CHAIN ROD
CCR36834SS01ST	36.83 4mm STAINLESS COATED CHAIN ROD
CCR38024SS01ST	38.02 4mm STAINLESS COATED CHAIN ROD
CCR39204SS01ST	39.20 4mm STAINLESS COATED CHAIN ROD
CCR40384SS01ST	40.38 4mm STAINLESS COATED CHAIN ROD
CCR41564SS01ST	41.56 4mm STAINLESS COATED CHAIN ROD
CCR42744SS01ST	42.74 4mm STAINLESS COATED CHAIN ROD
CCR43924SS01ST	43.92 4mm STAINLESS COATED CHAIN ROD
CCR45104SS01ST	45.10 4mm STAINLESS COATED CHAIN ROD
CCR46284SS01ST	46.28 4mm STAINLESS COATED CHAIN ROD
CCR47464SS01ST	47.46 4mm STAINLESS COATED CHAIN ROD

# STAINLESS STEEL CHAIN RODS

KEY: C = CENTER • LH = LEFT HAND • RH = RIGHT HAND • MSG = MOVING SIDE GUIDE • (PU) = POLYURETHANE • (S) = SANTOPRENE  
• (A) = ACETAL • (PP) = POLYPROPYLENE

UCR03764SS01ST	3.76 4mm STAINLESS UNCOATED CHAIN ROD 304 SERIES
UCR04944SS01ST	4.94 4mm STAINLESS UNCOATED CHAIN ROD 304 SERIES
UCR06134SS01ST	6.13 4mm STAINLESS UNCOATED CHAIN ROD 304 SERIES
UCR07314SS01ST	7.31 4mm STAINLESS UNCOATED CHAIN ROD 304 SERIES
UCR08494SS01ST	8.49 4mm STAINLESS UNCOATED CHAIN ROD 304 SERIES
UCR09674SS01ST	9.67 4mm STAINLESS UNCOATED CHAIN ROD 304 SERIES
UCR10854SS01ST	10.85 4mm STAINLESS UNCOATED CHAIN ROD 304 SERIES
UCR12034SS01ST	12.03 4mm STAINLESS UNCOATED CHAIN ROD 304 SERIES
UCR13214SS01ST	13.21 4mm STAINLESS UNCOATED CHAIN ROD 304 SERIES
UCR14394SS01ST	14.39 4mm STAINLESS UNCOATED CHAIN ROD 304 SERIES
UCR15574SS01ST	15.57 4mm STAINLESS UNCOATED CHAIN ROD 304 SERIES
UCR16764SS01ST	16.76 4mm STAINLESS UNCOATED CHAIN ROD 304 SERIES
UCR17944SS01ST	17.94 4mm STAINLESS UNCOATED CHAIN ROD 304 SERIES
UCR19124SS01ST	19.12 4mm STAINLESS UNCOATED CHAIN ROD 304 SERIES
UCR20304SS01ST	20.30 4mm STAINLESS UNCOATED CHAIN ROD 304 SERIES
UCR21484SS01ST	21.48 4mm STAINLESS UNCOATED CHAIN ROD 304 SERIES
UCR22664SS01ST	22.66 4mm STAINLESS UNCOATED CHAIN ROD 304 SERIES
UCR23844SS01ST	23.84 4mm STAINLESS UNCOATED CHAIN ROD 304 SERIES
UCR25024SS01ST	25.02 4mm STAINLESS UNCOATED CHAIN ROD 304 SERIES
UCR26204SS01ST	26.20 4mm STAINLESS UNCOATED CHAIN ROD 304 SERIES
UCR27394SS01ST	27.39 4mm STAINLESS UNCOATED CHAIN ROD 304 SERIES
UCR28574SS01ST	28.57 4mm STAINLESS UNCOATED CHAIN ROD 304 SERIES
UCR29754SS01ST	29.75 4mm STAINLESS UNCOATED CHAIN ROD 304 SERIES
UCR30934SS01ST	30.93 4mm STAINLESS UNCOATED CHAIN ROD 304 SERIES
UCR32114SS01ST	32.11 4mm STAINLESS UNCOATED CHAIN ROD 304 SERIES
UCR33294SS01ST	33.29 4mm STAINLESS UNCOATED CHAIN ROD 304 SERIES
UCR34474SS01ST	34.47 4mm STAINLESS UNCOATED CHAIN ROD 304 SERIES
UCR35654SS01ST	35.65 4mm STAINLESS UNCOATED CHAIN ROD 304 SERIES
UCR36834SS01ST	36.83 4mm STAINLESS UNCOATED CHAIN ROD 304 SERIES
UCR38024SS01ST	38.02 4mm STAINLESS UNCOATED CHAIN ROD 304 SERIES
UCR39204SS01ST	39.20 4mm STAINLESS UNCOATED CHAIN ROD 304 SERIES
UCR40384SS01ST	40.38 4mm STAINLESS UNCOATED CHAIN ROD 304 SERIES
UCR41564SS01ST	41.56 4mm STAINLESS UNCOATED CHAIN ROD 304 SERIES
UCR42744SS01ST	42.74 4mm STAINLESS UNCOATED CHAIN ROD 304 SERIES
UCR43924SS01ST	43.92 4mm STAINLESS UNCOATED CHAIN ROD 304 SERIES
UCR45104SS01ST	45.10 4mm STAINLESS UNCOATED CHAIN ROD 304 SERIES
UCR46284SS01ST	46.28 4mm STAINLESS UNCOATED CHAIN ROD 304 SERIES
UCR47464SS01ST	47.46 4mm STAINLESS UNCOATED CHAIN ROD 304 SERIES





# PLASTIC CHAIN RODS

KEY: C = CENTER • LH = LEFT HAND • RH = RIGHT HAND • MSG = MOVING SIDE GUIDE • (PU) = POLYURETHANE • (S) = SANTOPRENE  
• (A) = ACETAL • (PP) = POLYPROPYLENE

CR8.24-6P	CHAIN ROD - 8.24 MAXI
CR12.17-6P	CHAIN ROD - 12.17 MAXI
CR16.11-6P	CHAIN ROD - 16.11 MAXI
CR20.05-6P	CHAIN ROD - 20.05 MAXI
CR23.98-6P	CHAIN ROD - 23.98 MAXI
CR27.92-6P	CHAIN ROD - 27.92 MAXI
CR31.86-6P	CHAIN ROD - 31.86 MAXI
CR35.80-6P	CHAIN ROD - 35.80 MAXI
CR39.73-6P	CHAIN ROD - 39.73 MAXI
CR43.67-6P	CHAIN ROD - 43.67 MAXI
CR47.61-6P	CHAIN ROD - 47.61 MAXI
CR3.76-6P	CHAIN ROD - 3.76 MONO
CR7.53-6P	CHAIN ROD - 7.53 MONO
CR11.29-6P	CHAIN ROD - 11.29 MONO
CR15.06-6P	CHAIN ROD - 15.06 MONO
CR18.82-6P	CHAIN ROD - 18.82 MONO
CR22.58-6P	CHAIN ROD - 22.58 MONO
CR26.35-6P	CHAIN ROD - 26.35 MONO
CR30.11-6P	CHAIN ROD - 30.11 MONO
CR33.87-6P	CHAIN ROD - 33.87 MONO
CR37.64-6P	CHAIN ROD - 37.64 MONO
CR41.40-6P	CHAIN ROD - 41.40 MONO
CR45.17-6P	CHAIN ROD - 45.17 MONO



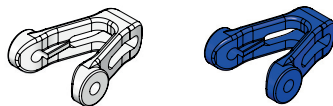
# **CHAIN TYPES**

## **[SUPERTIGHT CHAIN]**

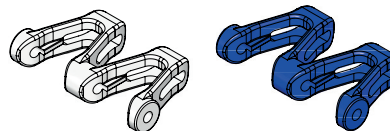


# 25 MM SUPERTIGHT CHAIN

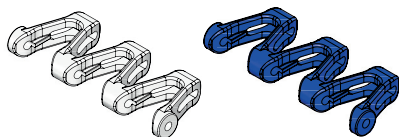
KEY: C = CENTER • LH = LEFT HAND • RH = RIGHT HAND • MSG = MOVING SIDE GUIDE • (PU) = POLYURETHANE • (S) = SANTOPRENE  
• (A) = ACETAL • (PP) = POLYPROPYLENE



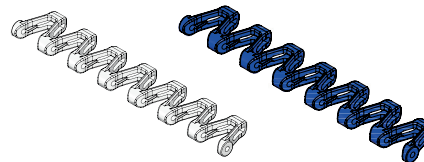
**DS-C-ST-PL-1-A**  
MST-PLAIN CENTER (A)  
**DS-C-ST-PL-1-A-BLUE**  
MST-PLAIN CENTER BLUE (A)



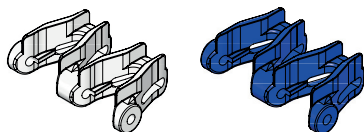
**DS-C-ST-PL-2-A**  
MST-PLAIN CENTER (A)  
**DS-C-ST-PL-2-A-BLUE**  
MST-PLAIN CENTER BLUE (A)



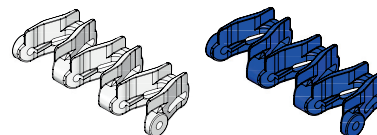
**DS-C-ST-PL-3-A**  
MST-PLAIN CENTER (A)  
**DS-C-ST-PL-3-A-BLUE**  
MST-PLAIN CENTER BLUE (A)



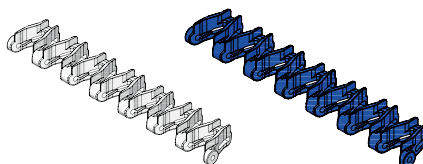
**DS0134-02A**  
MST-PLAIN CENTER (A)  
**DS0134-02A-BLUE**  
MST-PLAIN CENTER BLUE (A)



**DS-C-ST-6MM-RT-2-A**  
MST-6MM RAISED CENTER (A)  
**DS-C-ST-6MM-RT-2-A-BLUE**  
MST-6MM RAISED CENTER BLUE (A)



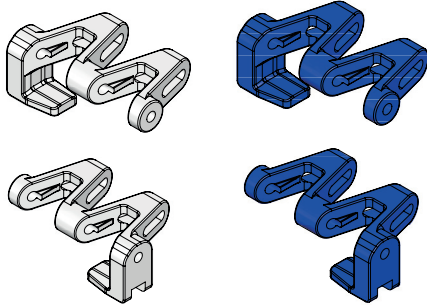
**DS-C-ST-6MM-RT-3-A**  
MST-6MM RAISED CENTER (A)  
**DS-C-ST-6MM-RT-3-A-BLUE**  
MST-6MM RAISED CENTER BLUE (A)



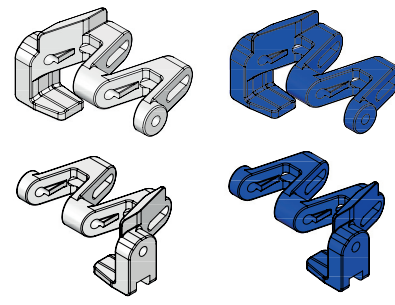
**DS0135-02A**  
MST-6MM RAISED CENTER (A)  
**DS0135-02A-BLUE**  
MST-6MM RAISED CENTER BLUE (A)

# 25 MM SUPERTIGHT CHAIN

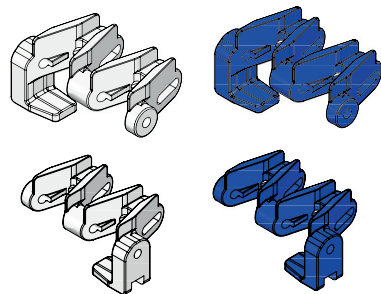
KEY: C = CENTER • LH = LEFT HAND • RH = RIGHT HAND • MSG = MOVING SIDE GUIDE • (PU) = POLYURETHANE • (S) = SANTOPRENE  
 • (A) = ACETAL • (PP) = POLYPROPYLENE



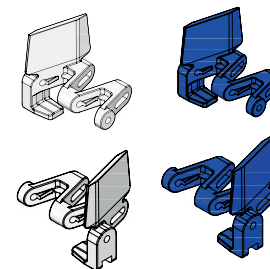
**DS0126-02A** | MST-LH PLAIN (A)  
**DS0126-02A-BLUE** | MST-LH PLAIN BLUE (A)  
**DS0127-02A** | MST-RH PLAIN (A)  
**DS0127-02A-BLUE** | MST-RH PLAIN BLUE (A)



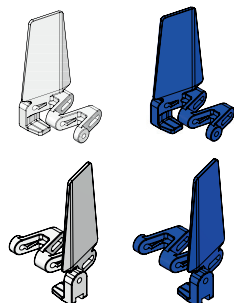
**DS0128-03A** | MST-LH 6MM MSG (A)  
**DS0128-03A-BLUE** | MST-LH 6MM MSG BLUE (A)  
**DS0129-03A** | MST-RH 6MM MSG (A)  
**DS0129-03A-BLUE** | MST-RH 6MM MSG BLUE (A)



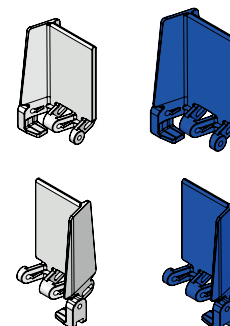
**DS0132-02A** | MST-LH 6MM RAISED (A)  
**DS0132-02A-BLUE** | MST-LH 6MM RAISED BLUE (A)  
**DS0133-02A** | MST - RH 6MM RAISED (A)  
**DS0133-02A-BLUE** | MST - RH 6MM RAISED BLUE (A)



**DS0136-01A-30** | MST-LH 30MM MSG (A)  
**DS0136-01A-30-BLUE** | MST-LH 30MM MSG BLUE (A)  
**DS0137-01A-30** | MST-RH 30MM MSG (A)  
**DS0137-01A-30-BLUE** | MST-RH 30MM MSG BLUE (A)



**DS0136-01A** | MST-LH 75MM MSG (A)  
**DS0136-01A-BLUE** | MST-LH 75MM MSG BLUE (A)  
**DS0137-01A** | MST-RH 75MM MSG(A)  
**DS0137-01A-BLUE** | MST-RH 75MM MSG BLUE (A)

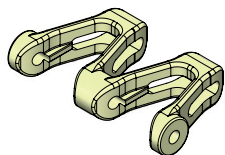


**DS0138-01A** | MST-LH 75MM MSG/PUSHER (A)  
**DS0138-01A-BLUE** | MST-LH 75MM MSG/PUSHER BLUE (A)  
**DS0139-01A** | MST-RH 75MM MSG/PUSHER (A)  
**DS0139-01A-BLUE** | MST-RH 75MM MSG/PUSHER BLUE (A)

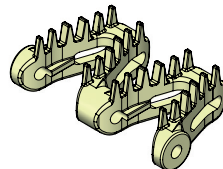


# 25 MM SUPERTIGHT CHAIN

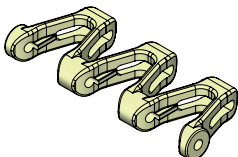
KEY: C = CENTER • LH = LEFT HAND • RH = RIGHT HAND • MSG = MOVING SIDE GUIDE • (PU) = POLYURETHANE • (S) = SANTOPRENE  
• (A) = ACETAL • (PP) = POLYPROPYLENE



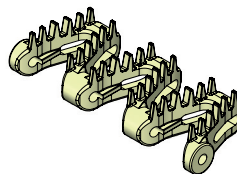
**DS-C-ST-PL-2-S**  
MST-PLAIN HF CENTER 55D (S)



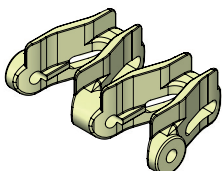
**DS-C-ST-6MM-BT-2-S**  
MST-6MM BRUSH TOP CENTER 55D (S)



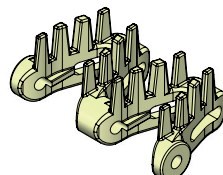
**DS-C-ST-PL-3-S**  
MST-PLAIN HF CENTER 55D (S)



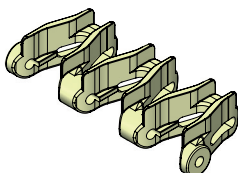
**DS-C-ST-6MM-BT-3-S**  
MST-6MM BRUSH TOP CENTER 55D (S)



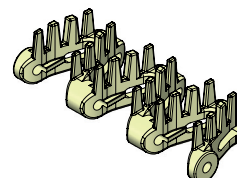
**DS-C-ST-6MM-RT-2-S**  
MST-6MM RAISED CENTER 55D (S)



**DS-C-ST-10MM-BT-2-S**  
MST-10MM BRUSH TOP CENTER 55D (S)



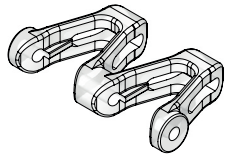
**DS-C-ST-6MM-RT-3-S**  
MST-6MM RAISED CENTER 55D (S)



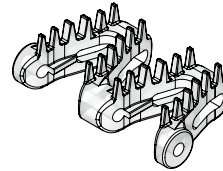
**DS-C-ST-10MM-BT-3-S**  
MST-10MM BRUSH TOP CENTER 55D (S)

# 25 MM SUPERTIGHT CHAIN

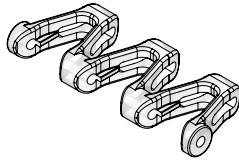
KEY: C = CENTER • LH = LEFT HAND • RH = RIGHT HAND • MSG = MOVING SIDE GUIDE • (PU) = POLYURETHANE • (S) = SANTOPRENE  
 • (A) = ACETAL • (PP) = POLYPROPYLENE



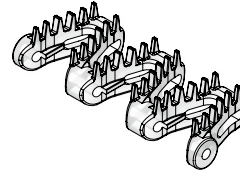
**DS-C-ST-PL-2-PU**  
 MST-PLAIN HF CENTER 85D (PU)



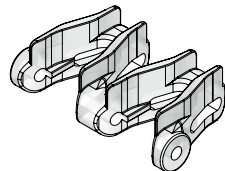
**DS-C-ST-6MM-BT-2-PU**  
 MST-6MM BRUSH TOP CENTER 85D (PU)



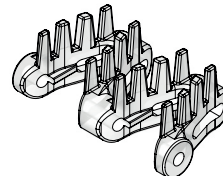
**DS-C-ST-PL-3-PU**  
 MST-PLAIN HF CENTER 85D (PU)



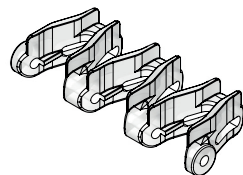
**DS-C-ST-6MM-BT-3-PU**  
 MST-6MM BRUSH TOP CENTER 85D (PU)



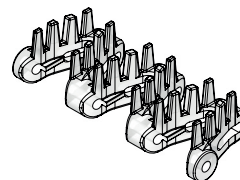
**DS-C-ST-6MM-RT-2-PU**  
 MST-6MM RAISED CENTER 85D (PU)



**DS-C-ST-10MM-BT-2-PU**  
 MST-10MM BRUSH TOP CENTER 85D (PU)



**DS-C-ST-6MM-RT-3-PU**  
 MST-6MM RAISED CENTER 85D (PU)

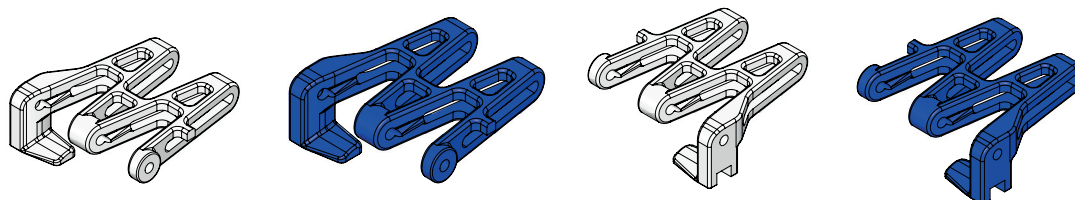


**DS-C-ST-10MM-BT-3-PU**  
 MST-10MM BRUSH TOP CENTER 85D (PU)

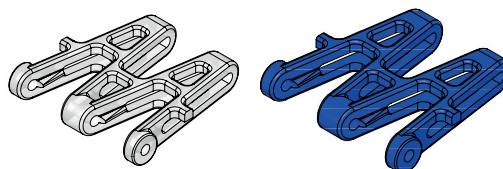


# 50 MM SUPERTIGHT CHAIN

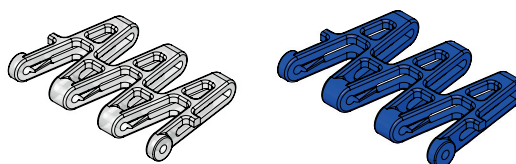
KEY: C = CENTER • LH = LEFT HAND • RH = RIGHT HAND • MSG = MOVING SIDE GUIDE • (PU) = POLYURETHANE • (S) = SANTOPRENE  
• (A) = ACETAL • (PP) = POLYPROPYLENE



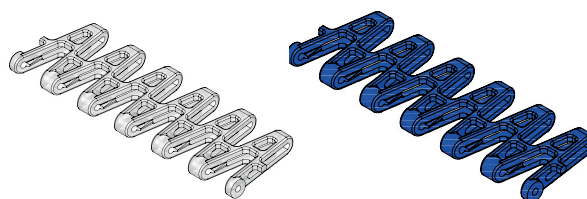
**DS0142A** | MST-LH PLAIN 50MM SUPERTIGHT (A)  
**DS0142A-BLUE** | MST-LH PLAIN 50MM SUPERTIGHT BLUE (A)  
**DS0143A** | MST-RH PLAIN 50MM SUPERTIGHT (A)  
**DS0143A-BLUE** | MST-RH PLAIN 50MM SUPERTIGHT BLUE (A)



**DS0011P-2V** | MST-PLAIN CENTER 50MM SUPERTIGHT (PP)  
**DS0011P-2V-BLUE** | MST-PLAIN CENTER 50MM SUPERTIGHT BLUE (PP)



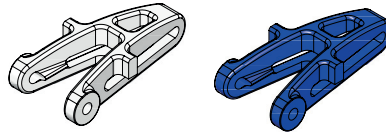
**DS0011P-3V** | MST-PLAIN CENTER 50MM SUPERTIGHT (PP)  
**DS0011P-3V-BLUE** | MST-PLAIN CENTER 50MM SUPERTIGHT BLUE (PP)



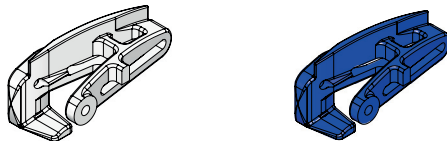
**DS0011P** | MST-PLAIN CENTER 50MM SUPERTIGHT (PP)  
**DS0011P-BLUE** | MST-PLAIN CENTER 50MM SUPERTIGHT BLUE (PP)

# 50 MM PILLOWTOP CHAIN

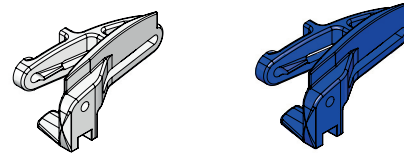
KEY: C = CENTER • LH = LEFT HAND • RH = RIGHT HAND • MSG = MOVING SIDE GUIDE • (PU) = POLYURETHANE • (S) = SANTOPRENE  
 • (A) = ACETAL • (PP) = POLYPROPYLENE



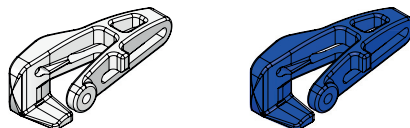
**DS0162A-1V**  
 50MM SUPERTIGHT PILLOW TOP LINK CENTER (A)  
**DS0162A-1V-BLUE**  
 50MM SUPERTIGHT PILLOW TOP LINK CENTER BLUE (A)



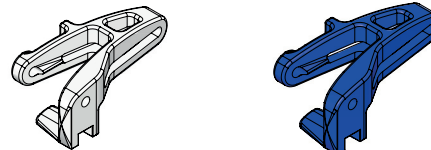
**DS0163A-1/2**  
 50MM SUPERTIGHT PILLOW TOP MSG - 1/2 LEFT (A)  
**DS0163A-1/2-BLUE**  
 50MM SUPERTIGHT PILLOW TOP MSG - 1/2 LEFT BLUE (A)



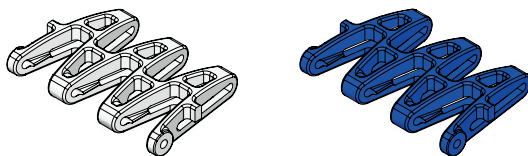
**DS0164A-1/2**  
 50MM SUPERTIGHT PILLOW TOP MSG - 1/2 RIGHT (A)  
**DS0164A-1/2-BLUE**  
 50MM SUPERTIGHT PILLOW TOP MSG - 1/2 RIGHT BLUE (A)



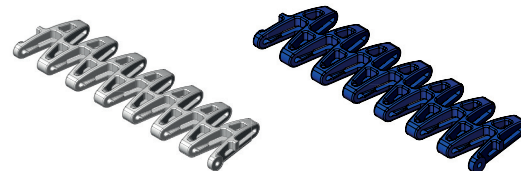
**DS0160A-1/2**  
 50MM SUPERTIGHT PILLOW TOP PLAIN - 1/2 LEFT (A)  
**DS0160A-1/2-BLUE**  
 50MM SUPERTIGHT PILLOW TOP PLAIN - 1/2 LEFT BLUE (A)



**DS0161A-1/2**  
 50MM SUPERTIGHT PILLOW TOP PLAIN - 1/2 RIGHT (A)  
**DS0161A-1/2-BLUE**  
 50MM SUPERTIGHT PILLOW TOP PLAIN - 1/2 RIGHT BLUE (A)



**DS0162A-3V**  
 50MM SUPERTIGHT PILLOW TOP LINK CENTER (A)  
**DS0162A-3V-BLUE**  
 50MM SUPERTIGHT PILLOW TOP LINK CENTER BLUE (A)



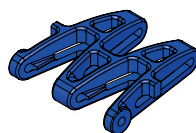
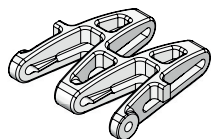
**DS0162A**  
 50MM SUPERTIGHT PILLOW TOP CENTER (A)  
**DS0162A-BLUE**  
 50MM SUPERTIGHT PILLOW TOP CENTER BLUE (A)



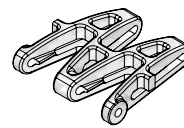
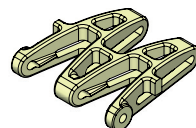


# 50 MM PILLOWTOP CHAIN

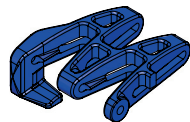
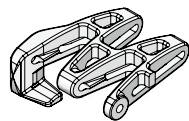
KEY: C = CENTER • LH = LEFT HAND • RH = RIGHT HAND • MSG = MOVING SIDE GUIDE • (PU) = POLYURETHANE • (S) = SANTOPRENE  
• (A) = ACETAL • (PP) = POLYPROPYLENE



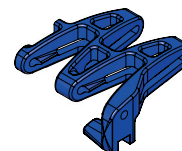
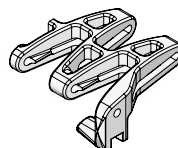
**DS0162A-2V**  
50MM SUPERTIGHT PILLOW TOP LINK CENTER (A)  
**DS0162A-2V-BLUE**  
50MM SUPERTIGHT PILLOW TOP LINK CENTER BLUE (A)



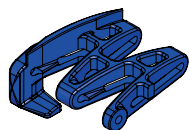
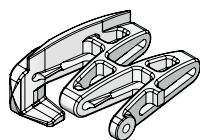
**DS0162S-2V**  
50 MM SUPERTIGHT PILLOW TOP LINK CENTER (S)  
**DS0162PU-2V**  
50 MM SUPERTIGHT PILLOW TOP LINK CENTER (PU)



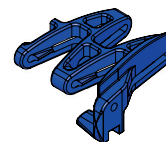
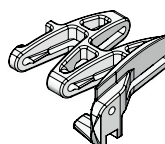
**DS0160A**  
50MM SUPERTIGHT PILLOW TOP LH (A)  
**DS0160A-BLUE**  
50MM SUPERTIGHT PILLOW TOP LH - BLUE (A)



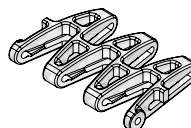
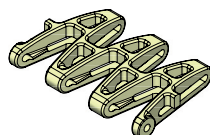
**DS0161A**  
50MM SUPERTIGHT PILLOW TOP RH  
**DS0161A-BLUE**  
50MM SUPERTIGHT PILLOW TOP RH - BLUE



**DS0163A**  
50MM SUPERTIGHT PILLOW TOP MSG - LEFT (A)  
**DS0163A-BLUE**  
50MM SUPERTIGHT PILLOW TOP MSG - LEFT BLUE (A)



**DS0164A**  
50MM SUPERTIGHT PILLOW TOP MSG - RIGHT (A)  
**DS0164A-BLUE**  
50MM SUPERTIGHT PILLOW TOP MSG - RIGHT BLUE (A)



**DS0162S-3V**  
50 MM SUPERTIGHT PILLOW TOP LINK CENTER (S)  
**DS0162PU-3V**  
50 MM SUPERTIGHT PILLOW TOP LINK CENTER (PU)

# ACCUMULATION OPTIONS

KEY: C = CENTER • LH = LEFT HAND • RH = RIGHT HAND • MSG = MOVING SIDE GUIDE • (PU) = POLYURETHANE • (S) = SANTOPRENE  
• (A) = ACETAL • (PP) = POLYPROPYLENE



**DS5093-16-XXX**  
Ø16.0MM  
TUBE TOP TUBE  
XXX = LENGTH OF TUBE  
REFER TO CHAIN DRAWING FOR LENGTH

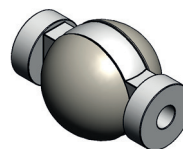


**DS0054-01A**  
Ø16.0MM  
TUBE TOP BEARING  
(A) CENTER LINK

## OTHER ACCUMULATION OPTIONS:



**DS0053P**  
MUS - 16MM BARREL ROLLER (PP)



**DA7000**  
MUS - SPHERICAL ROLLER  
ASSEMBLY

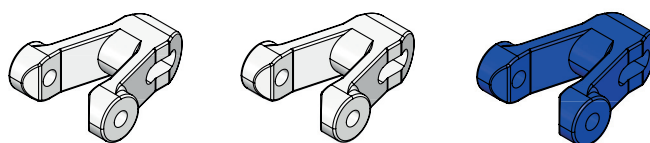


# **CHAIN TYPES**

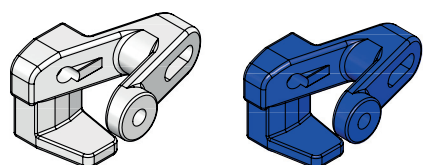
## **[LEGACY CHAIN]**

# 25 MM MULTISPAN CHAIN

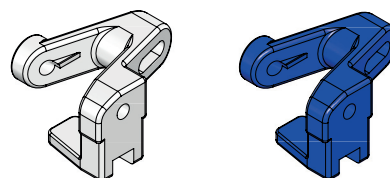
KEY: C = CENTER • LH = LEFT HAND • RH = RIGHT HAND • MSG = MOVING SIDE GUIDE • (PU) = POLYURETHANE • (S) = SANTOPRENE  
 • (A) = ACETAL • (PP) = POLYPROPYLENE



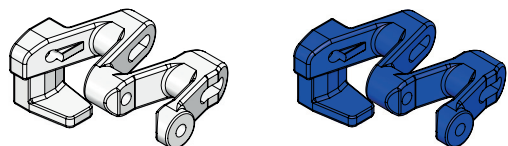
**DS0001A** | MUS PLAIN CENTER (A)  
**DS0001P** | MUS PLAIN CENTER (PP)  
**DS0001P-BLUE** | MUS - PLAIN BLUE CENTER (PP)



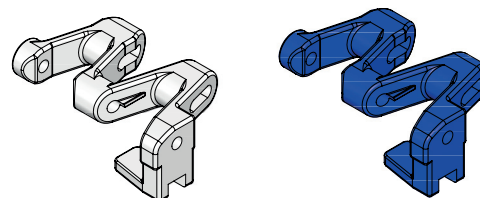
**DS0120A** | MUS - LH PLAIN (A)  
**DS0120A-BLUE** | MUS - LH PLAIN BLUE (A)



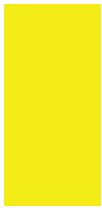
**DS0121A** | MUS - LH PLAIN (A)  
**DS0121A-BLUE** | MUS - RH PLAIN BLUE (A)



**DS0146A** | MUS - LH COMBO PLAIN (A)  
**DS0146A-BLUE** | MUS - LH COMBO PLAIN BLUE (A)

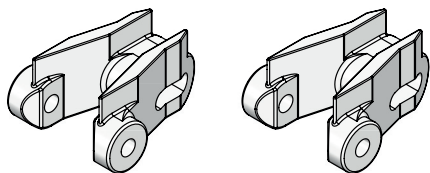


**DS0147A** | MUS - RH COMBO PLAIN (A)  
**DS0147A-BLUE** | MUS - RH COMBO PLAIN BLUE (A)

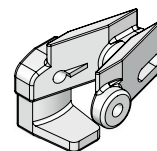


# 25 MM MULTISPAN CHAIN

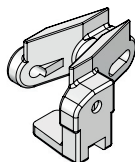
KEY: C = CENTER • LH = LEFT HAND • RH = RIGHT HAND • MSG = MOVING SIDE GUIDE • (PU) = POLYURETHANE • (S) = SANTOPRENE  
• (A) = ACETAL • (PP) = POLYPROPYLENE



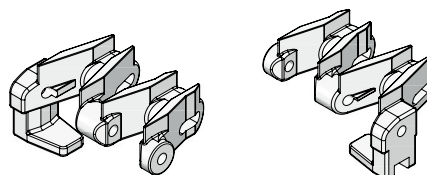
**DS0002-01A** | MUS - 6MM RAISED CENTER (A)  
**DS0002P** | MUS - 6MM RAISED CENTER (PP)



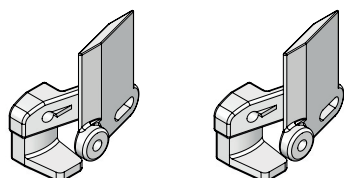
**DS0124-01A** | MUS - 6MM RAISED LH (A)



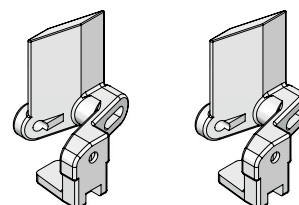
**DS0125-01A** | MUS - 6MM RAISED RH (A)



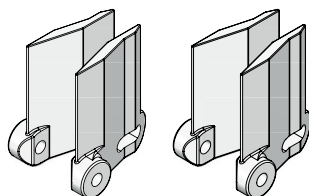
**DS0148A** | LEFT HAND COMBO 6MM RAISED (A)  
**DS0149A** | RIGHT HAND COMBO 6MM RAISED (A)



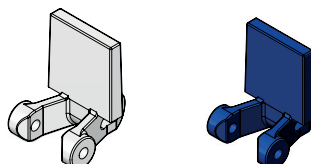
**DS0122A** | MUS - LH 30MM MSG (A)  
**DS0122P** | MUS - LH 30MM MSG (PP)



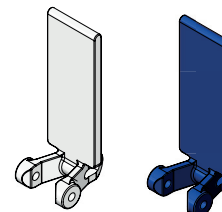
**DS0123A** | MUS - RH 30MM MSG (A)  
**DS0123P** | MUS - RH 30MM MSG (PP)



**DS0003-01-01A**  
30MM RAISED CLEAT (A) CENTER (A)  
**DS0003-01-01P**  
30MM RAISED CLEAT CENTER (PP)



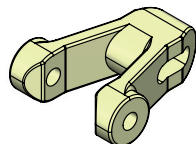
**DS0005A**  
30MM PUSHER CLEAT CENTER (A)  
**DS0005A-BLUE**  
30MM PUSHER CLEAT CENTER BLUE (A)



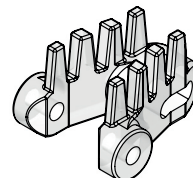
**DS0005A-75**  
75MM PUSHER CLEAT CENTER (A)  
**DS0005A-75-BLUE**  
75MM PUSHER CLEAT CENTER BLUE (A)

# 25 MM MULTISPAN CHAIN

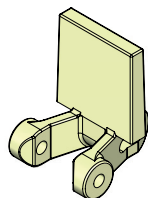
KEY: C = CENTER • LH = LEFT HAND • RH = RIGHT HAND • MSG = MOVING SIDE GUIDE • (PU) = POLYURETHANE • (S) = SANTOPRENE  
 • (A) = ACETAL • (PP) = POLYPROPYLENE



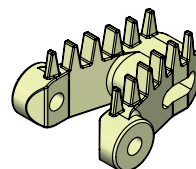
**DS0001S55 (55-87)**  
 MUS-PLAIN CENTER (S)  
 55 OR 87 DUROMETER



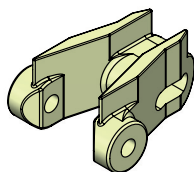
**DS0010-BT-PU**  
 MUS-10MM BRUSH TOP CENTER(PU)  
 70 DUROMETER



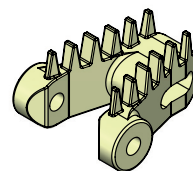
**DS0005-(S55-S87)**  
 MUS-30MM PUSHER CLEAT CENTER (S)  
 55 OR 87 DUROMETER



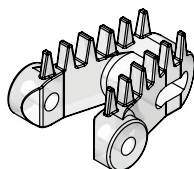
**DS0010-BT (55-75)**  
 MUS-10MM BRUSH TOP CENTER (S)  
 55 OR 75 DUROMETER



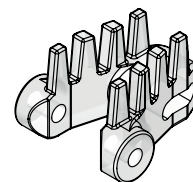
**DS0002S-01S (55-87)**  
 MUS-6MM RAISED TOP CENTER (S)  
 55 OR 87 DUROMETER



**DS0004-01-BT-55**  
 MUS-6MM BRUSH TOP CENTER (S)  
 55 DUROMETER



**DS0004-BT-PU**  
 MUS-6MM BRUSH TOP CENTER (PU)  
 70 DUROMETER

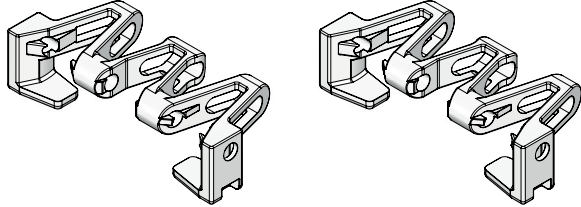


**DS0010-BT-PU**  
 MUS-10MM BRUSH TOP CENTER (PU)  
 70 DUROMETER

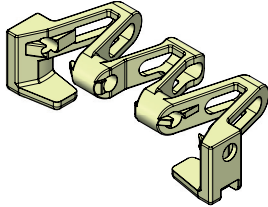


# 25 MM MONOSPAN CHAIN

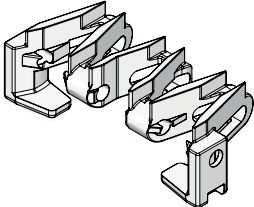
KEY: C = CENTER • LH = LEFT HAND • RH = RIGHT HAND • MSG = MOVING SIDE GUIDE • (PU) = POLYURETHANE • (S) = SANTOPRENE  
• (A) = ACETAL • (PP) = POLYPROPYLENE



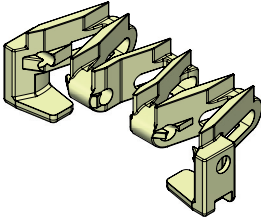
**DS0200-01A**  
MON-PLAIN LINK (A)  
**DS0200-01P**  
MON-PLAIN LINK (PP)



**DS0200-01S55**  
MON-PLAIN LINK (S)  
55 DUROMETER



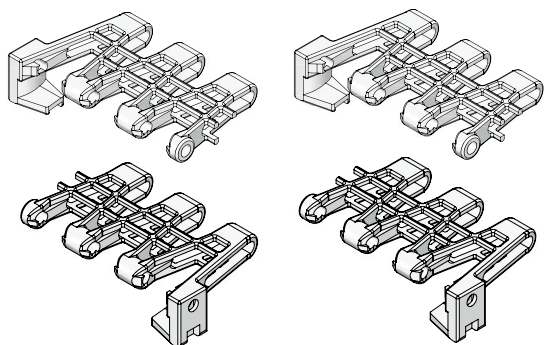
**DS0200-03A**  
MON-6MM RAISED (A)



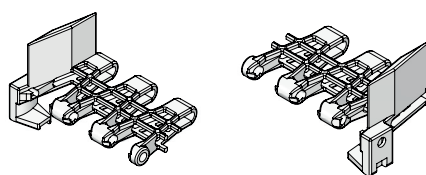
**DS0200-03S55**  
MON-6MM RAISED (S)  
55 DUROMETER

# 50 MM MAXISPAN CHAIN

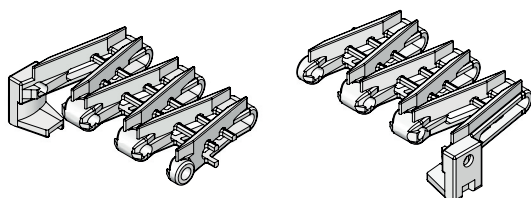
KEY: C = CENTER • LH = LEFT HAND • RH = RIGHT HAND • MSG = MOVING SIDE GUIDE • (PU) = POLYURETHANE • (S) = SANTOPRENE  
 • (A) = ACETAL • (PP) = POLYPROPYLENE



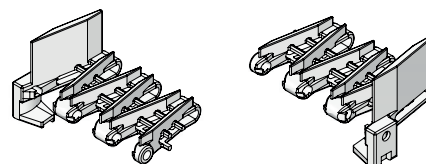
DS5210A - MAX-LH PLAIN (A)  
 DS5230A - MAX-RH PLAIN (A)  
 DS5210P - MAX-LH PLAIN (PP)  
 DS5230P - MAX-RH PLAIN (PP)



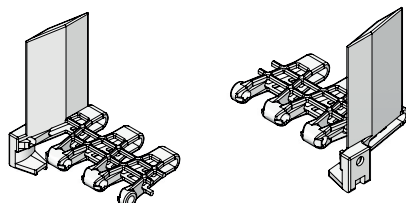
DS5218A - MAX-LH 30MM MSG (A)  
 DS5238A - MAX-RH 30MM MSG (A)



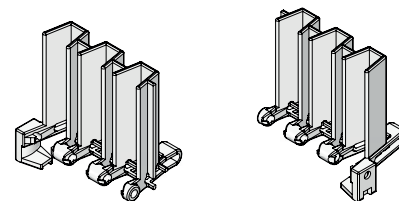
DS5212A - MAX-LH 6MM RAISED (A)  
 DS5232A - MAX-RH 6MM RAISED (A)



DS5220A - MAX-LH 6MM / 30MM MSG (A)  
 DS5240A - MAX-VRH 6MM / 30MM MSG (A)



DS5214A - LH 75MM MSG (A)  
 DS5234A - RH 75MM MSG (A)



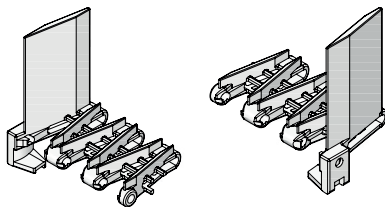
DS5222A - LH 75MM PUSHER CLEAT (A)  
 DS5242A - RH 75MM PUSHER CLEAT (A)



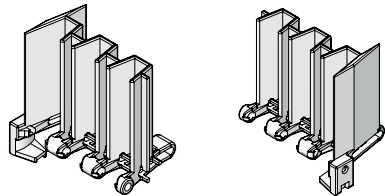


# 50 MM MAXISPAN CHAIN

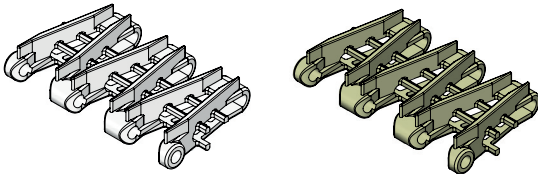
KEY: C = CENTER • LH = LEFT HAND • RH = RIGHT HAND • MSG = MOVING SIDE GUIDE • (PU) = POLYURETHANE • (S) = SANTOPRENE  
• (A) = ACETAL • (PP) = POLYPROPYLENE



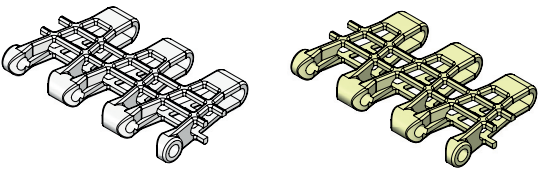
**DS5216A** - MAX-LH 6MM RAISED / 75MM MSG (A)  
**DS5236A** - MAX-RH 6MM RAISED / 75MM MSG (A)



**DS5224A** - MAX-LH 75MM PUSHER CLEAT / MSG (A)  
**DS5244A** - MAX-RH 75MM PUSHER CLEAT / MSG (A)



**DS5203A** - MAX-6MM RAISED CENTER (A)  
**DS5203S55** - MAX-6MM RAISED CENTER 55D (S)



**DS5201A** - MAX-PLAIN CENTER (A)  
**DS5201P** - MAX-PLAIN CENTER (PP)  
**DS5201S55** - MAX-PLAIN CENTER 55D (S)



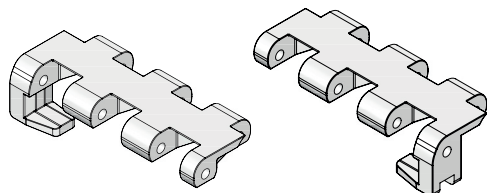
# **CHAIN TYPES**

## **[SPECIALTY CHAIN]**

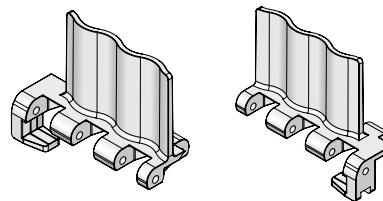


# 25 MM CLOSED TOP CHAIN

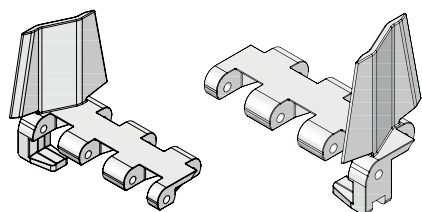
KEY: C = CENTER • LH = LEFT HAND • RH = RIGHT HAND • MSG = MOVING SIDE GUIDE • (PU) = POLYURETHANE • (S) = SANTOPRENE  
• (A) = ACETAL • (PP) = POLYPROPYLENE



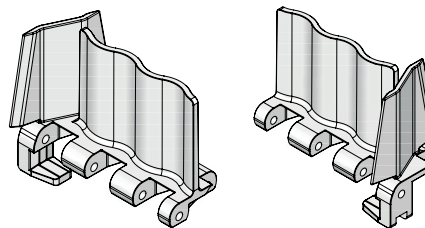
**DS0063A** - MCT-RH PLAIN (A)  
**DS0067A** - MCT-LH PLAIN (A)



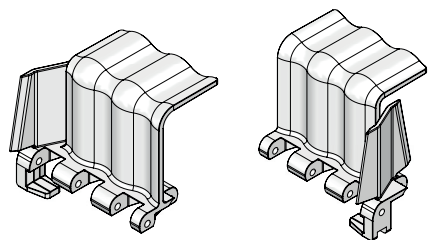
**DS0068A** - MCT-LH 50MM PUSHER (A)  
**DS0064A** - MCT-RH 50 MM PUSHER (A)



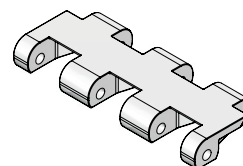
**DS0069A** - MCT-LH 50MM MSG (A)  
**DS0065A** - MCT-RH 50MM MSG (A)



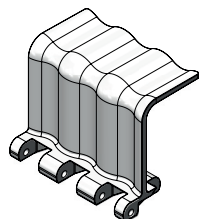
**DS0070A** - MCT-LH 50MM PUSHER/MSG (A)  
**DS0066A** - MCT-RH 50MM PUSHER/MSG (A)



**DS0057A** - MCT-LH 50MM SCOOP/MSG (A)  
**DS0056A** - MCT-RH 50MM SCOOP/MSG (A)



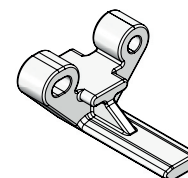
**DS0061A** - MCT-PLAIN CENTER (A)



**DS0058A**  
MCT-50MM PCENTER SCOOP (A)



**DS0060A**  
MCT-INTERNAL BARREL ROLLER (A)



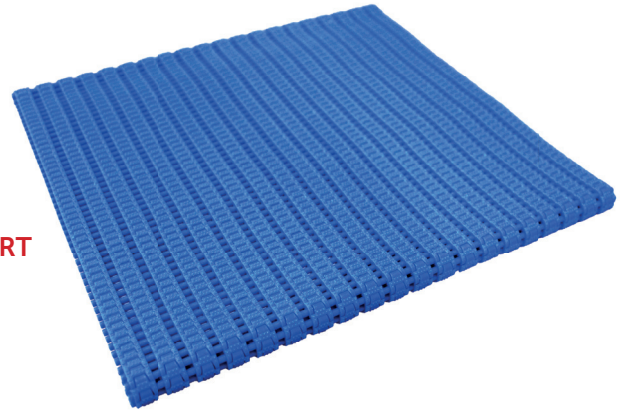
**DS9964-CT-01**  
MCT-RETURN CHAIN SUPPORT TAB (A)

# MICROSPAN CHAIN

KEY: C = CENTER • LH = LEFT HAND • RH = RIGHT HAND • MSG = MOVING SIDE GUIDE • (PU) = POLYURETHANE • (S) = SANTOPRENE  
 • (A) = ACETAL • (PP) = POLYPROPYLENE

## 300 MM WIDTH

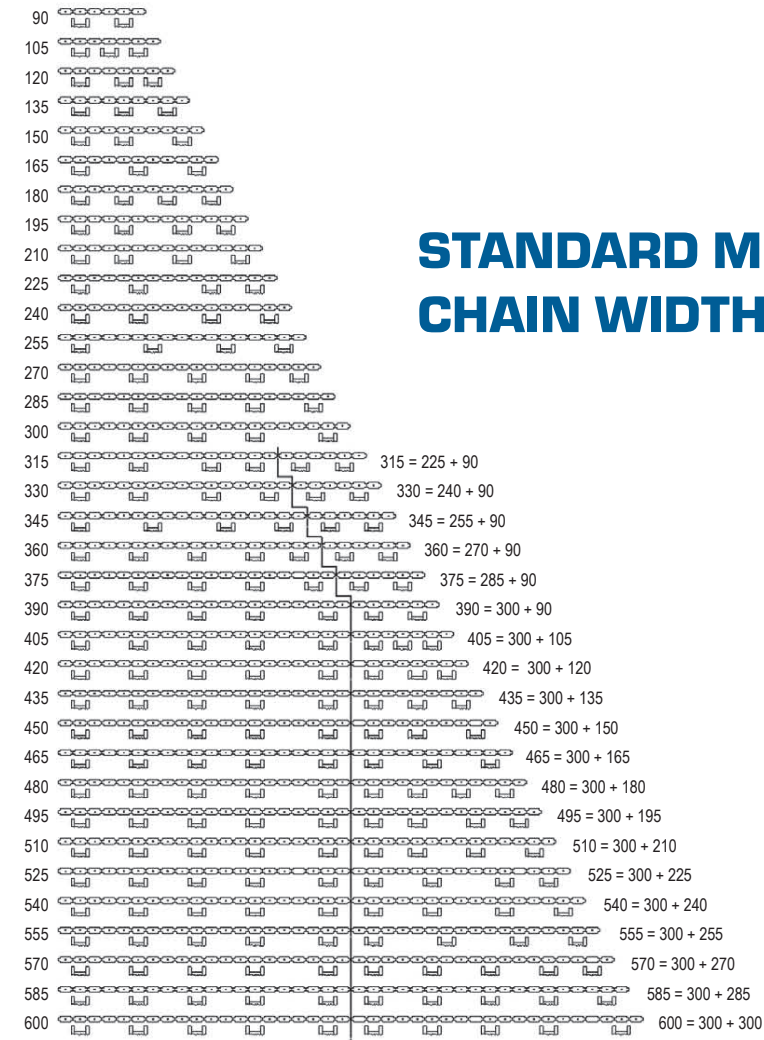
- DA6600-2030-BLUE      4MM PLAIN BLUE
- DA6600-2050- BLUE      6MM PLAIN BLUE
- DA6600-2040-BLUE      4MM RAISED BLUE
- DA6600-2060-BLUE      6MM RAISED BLUE
- DA6600-2060HF-BLUE    6MM HIGH FRICTION BLUE



## UNDER 300 MM WIDTH (XX = WIDTH<300MM) SEE CHART

- DA6600-2030-BLUE-XX    4MM PLAIN BLUE
- DA6600-2050- BLUE-XX    6MM PLAIN BLUE
- DA6600-2040-BLUE-XX    4MM RAISED BLUE
- DA6600-2060-BLUE-XX    6MM RAISED BLUE
- DA6600-2060HF-BLUE-XX 6MM HIGH FRICTION BLUE

MicroSpan  
Chain Width



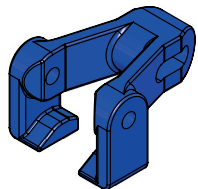
## STANDARD MICROSPAN CHAIN WIDTHS

Follow the same pattern as above for larger chain widths.

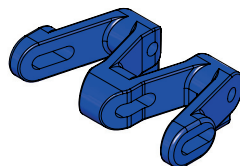


# 25 MM MINILINK CHAIN

KEY: C = CENTER • LH = LEFT HAND • RH = RIGHT HAND • MSG = MOVING SIDE GUIDE • (PU) = POLYURETHANE • (S) = SANTOPRENE  
• (A) = ACETAL • (PP) = POLYPROPYLENE



**DS8010-30-06**  
MIN-30MM PLAIN (A)

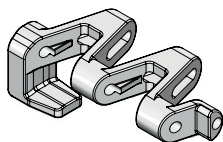


**DS8010-60-06**  
MIN-60MM PLAIN (A)

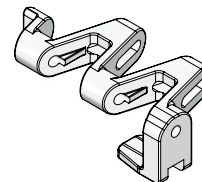
# 25 MM J-TRAX CHAIN

## JTRAX CHAIN ROD

REFER TO CHAIN ROD SECTION FOR  
SPECIFIC CHAIN ROD LENGTHS AND TYPES



**DS0155-02A**  
MJT-LEFT HAND JTRAX (A)



**DS0156-02A**  
MJT-RIGHT HAND JTRAX (A)

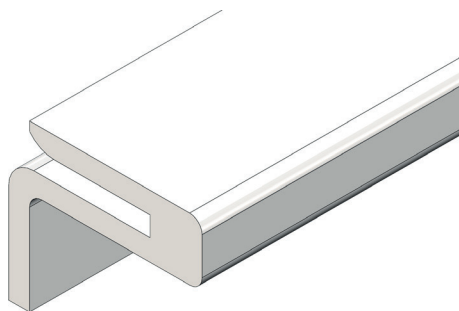


# **BASIC CONVEYOR COMPONENTS**



# WEARSTRIP & HARDWARE

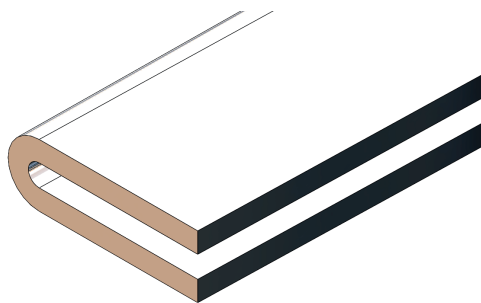
KEY: C = CENTER • LH = LEFT HAND • RH = RIGHT HAND • MSG = MOVING SIDE GUIDE • (PU) = POLYURETHANE • (S) = SANTOPRENE  
• (A) = ACETAL • (PP) = POLYPROPYLENE



**DS2100 - UHMW WEARSTRIP [ 12.6 FT STICKS ]**  
**DS2100-01 - SPANLON WEARSTRIP [ 12.6 FT STICKS ]**



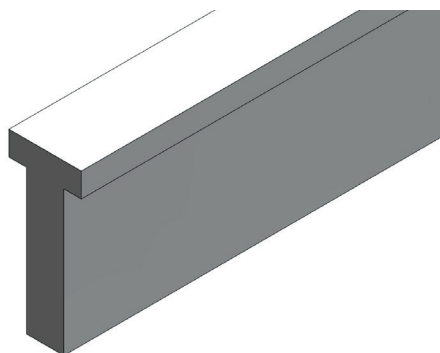
**DS2165**  
**NYLON DRIVE RIVET**



**DS2102 - STAINLESS WEARSTRIP [ 4 FT STICKS ]**  
**DS2105 - MILD STEEL WEARSTRIP [ 4 FT STICKS ]**



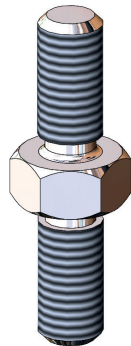
**946075**  
**10-32 X .50 NYLON HEX HEAD SLOTTED**



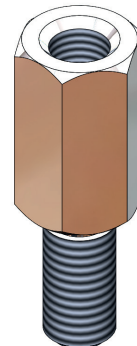
**DS2135**  
**UHMW CENTER SUPPORT T-RAIL [BY FOOT]**

# CONVEYOR SPECIALTY MOUNTING HARDWARE

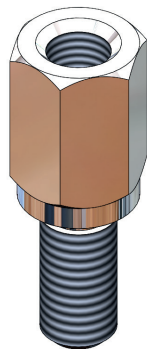
KEY: C = CENTER • LH = LEFT HAND • RH = RIGHT HAND • MSG = MOVING SIDE GUIDE • (PU) = POLYURETHANE • (S) = SANTOPRENE  
• (A) = ACETAL • (PP) = POLYPROPYLENE



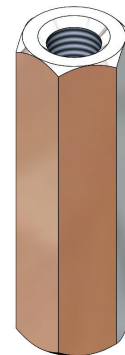
**DS3355LSM**  
STANDOFF M8X18X21 MALE/MALE



**DS3355M**  
STANDOFF M8X18X22 MALE/FEMALE



**DS3355M-19**  
STANDOFF M8X18X19 MALE/FEMALE



**DS3355M-43M**  
STANDOFF 43MM FEMALE



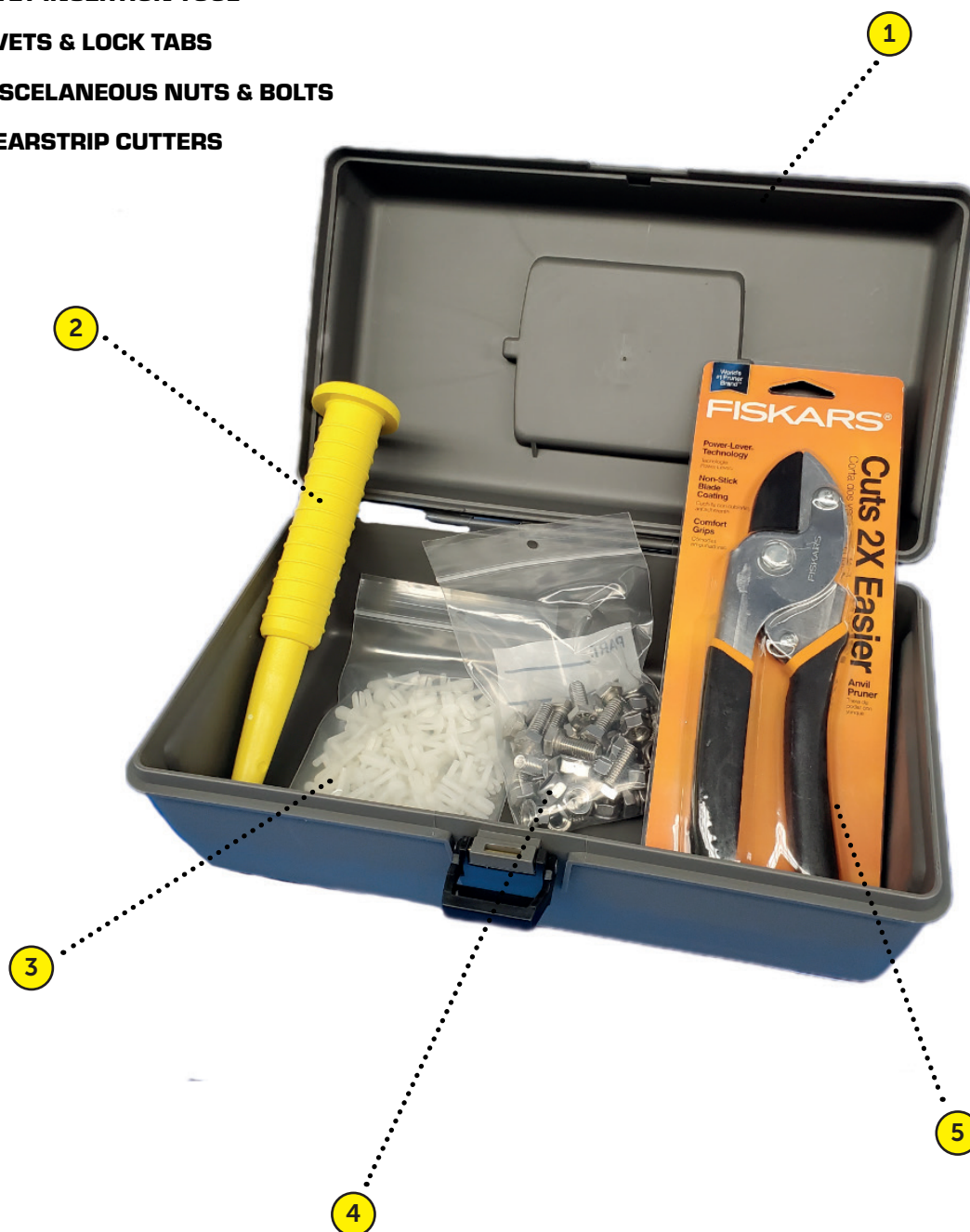


# MAINTENANCE KIT [DA3500-M-K-01-M]

KEY: C = CENTER • LH = LEFT HAND • RH = RIGHT HAND • MSG = MOVING SIDE GUIDE • (PU) = POLYURETHANE • (S) = SANTOPRENE  
• (A) = ACETAL • (PP) = POLYPROPYLENE

**MUST BE PURCHASED AS FULL KIT.  
KIT INCLUDES THE FOLLOWING ITEMS.**

- 1. PLASTIC TOOL BOX**
- 2. RIVET INSERTION TOOL**
- 3. RIVETS & LOCK TABS**
- 4. MISCELANEOUS NUTS & BOLTS**
- 5. WEARSTRIP CUTTERS**



# SPAN LUBE [DS000]

KEY: C = CENTER • LH = LEFT HAND • RH = RIGHT HAND • MSG = MOVING SIDE GUIDE • (PU) = POLYURETHANE • (S) = SANTOPRENE  
• (A) = ACETAL • (PP) = POLYPROPYLENE



**SPANLUBE WITH BOTTLE AND SPOUT CAP**  
**DS0000**



# **DRIVES & IDLERS**

## **[FULL ASSEMBLIES]**

# 25MM STANDARD DRIVE & IDLER

KEY: C = CENTER • LH = LEFT HAND • RH = RIGHT HAND • MSG = MOVING SIDE GUIDE • (PU) = POLYURETHANE • (S) = SANTOPRENE  
• (A) = ACETAL • (PP) = POLYPROPYLENE

**1. SHAFT SHIELD**  
**DS4039S87**

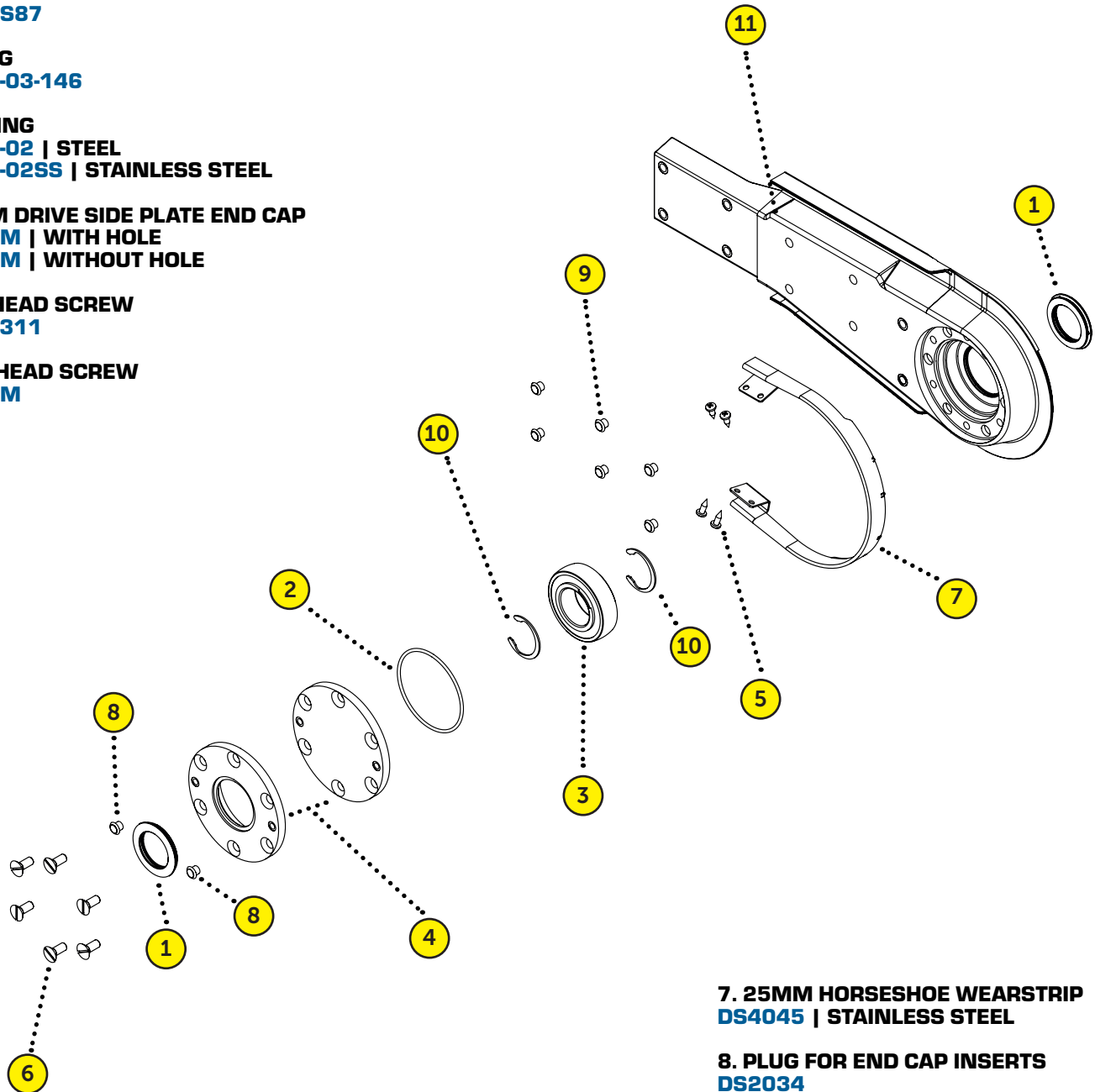
**2. O-RING**  
**DS9045-03-146**

**3. BEARING**  
**DS4251-02 | STEEL**  
**DS4251-02SS | STAINLESS STEEL**

**4. 25MM DRIVE SIDE PLATE END CAP**  
**DS4134M | WITH HOLE**  
**DS4133M | WITHOUT HOLE**

**5. PAN HEAD SCREW**  
**92325A311**

**6. FLAT HEAD SCREW**  
**DS9358M**



**7. 25MM HORSESHOE WEARSTRIP**  
**DS4045 | STAINLESS STEEL**

**8. PLUG FOR END CAP INSERTS**  
**DS2034**

**9. PLUG**  
**DS2035**

**10. DRIVE SHAFT CRESCENT RING**  
**DS9040-2000-125**

**11. PLASTIC DRIVE SIDE PLATE**  
**DS4131M | LEFT SIDE**  
**DS4132M | RIGHT SIDE**



# 50MM STANDARD DRIVE & IDLER

KEY: C = CENTER • LH = LEFT HAND • RH = RIGHT HAND • MSG = MOVING SIDE GUIDE • (PU) = POLYURETHANE • (S) = SANTOPRENE  
• (A) = ACETAL • (PP) = POLYPROPYLENE

**1. SHAFT SHIELD**  
**DS4039S87**

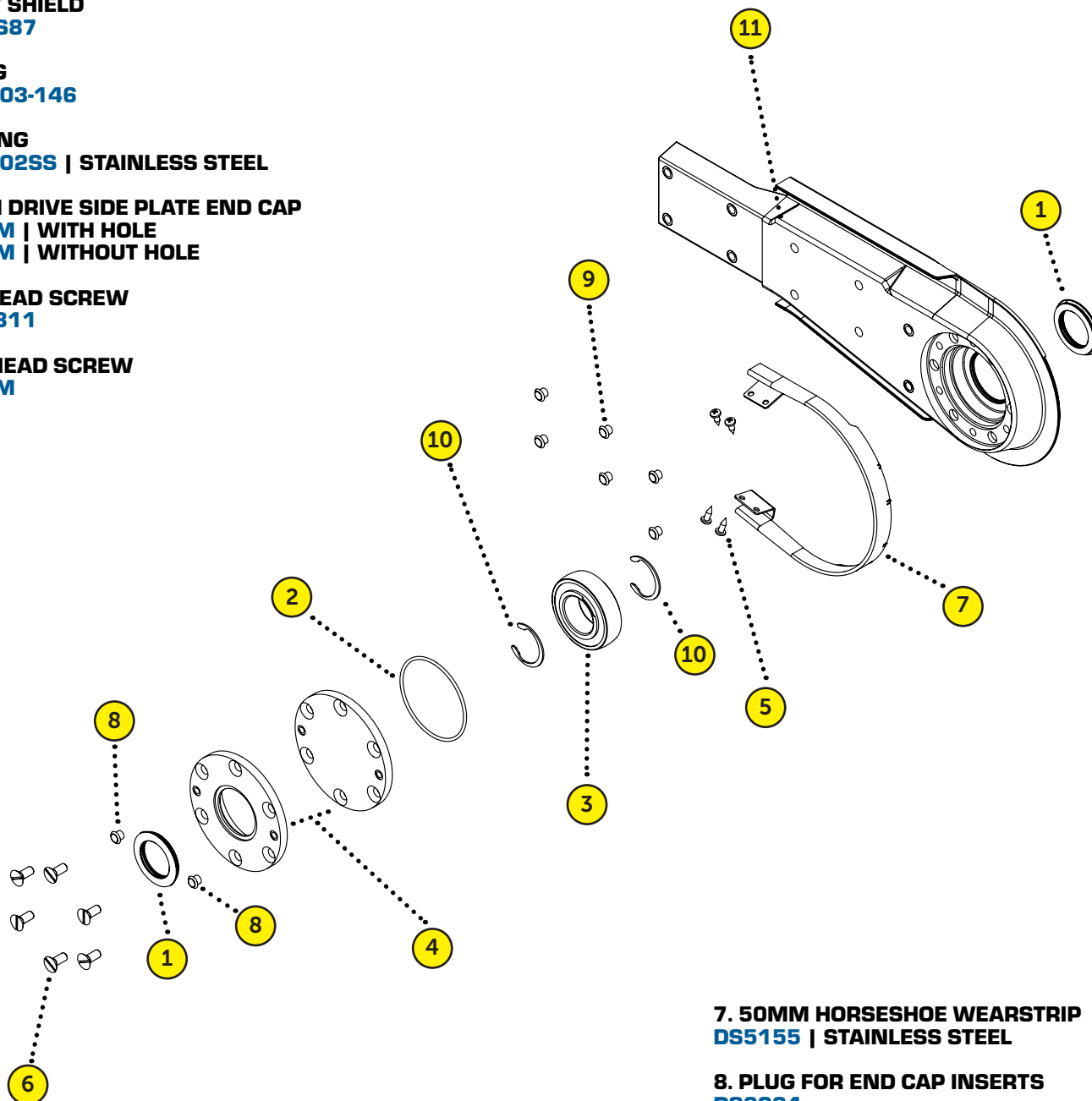
**2. O-RING**  
**DS9045-03-146**

**3. BEARING**  
**DS4251-02SS | STAINLESS STEEL**

**4. 50MM DRIVE SIDE PLATE END CAP**  
**DS4134M | WITH HOLE**  
**DS4133M | WITHOUT HOLE**

**5. PAN HEAD SCREW**  
**92325A311**

**6. FLAT HEAD SCREW**  
**DS9358M**



**7. 50MM HORSESHOE WEARSTRIP**  
**DS5155 | STAINLESS STEEL**

**8. PLUG FOR END CAP INSERTS**  
**DS2034**

**9. PLUG**  
**DS2035**

**10. DRIVE SHAFT CRESCENT RING**  
**DS9040-2000-125**

**11. PLASTIC DRIVE SIDE PLATE**  
**DS4035M | LEFT SIDE**  
**DS4036M | RIGHT SIDE**

# MINILINK IDLER KIT

KEY: C = CENTER • LH = LEFT HAND • RH = RIGHT HAND • MSG = MOVING SIDE GUIDE • (PU) = POLYURETHANE • (S) = SANTOPRENE  
 • (A) = ACETAL • (PP) = POLYPROPYLENE

**1. MINILINK SPROCKET STANDARD HALF**  
**DS8012-1.00-10**

**2. #4-18X 1/2" SL-PMSMS S.S.**  
**DS9301**

**3. MINILINK CHAIN ROD**  
**DS8011**

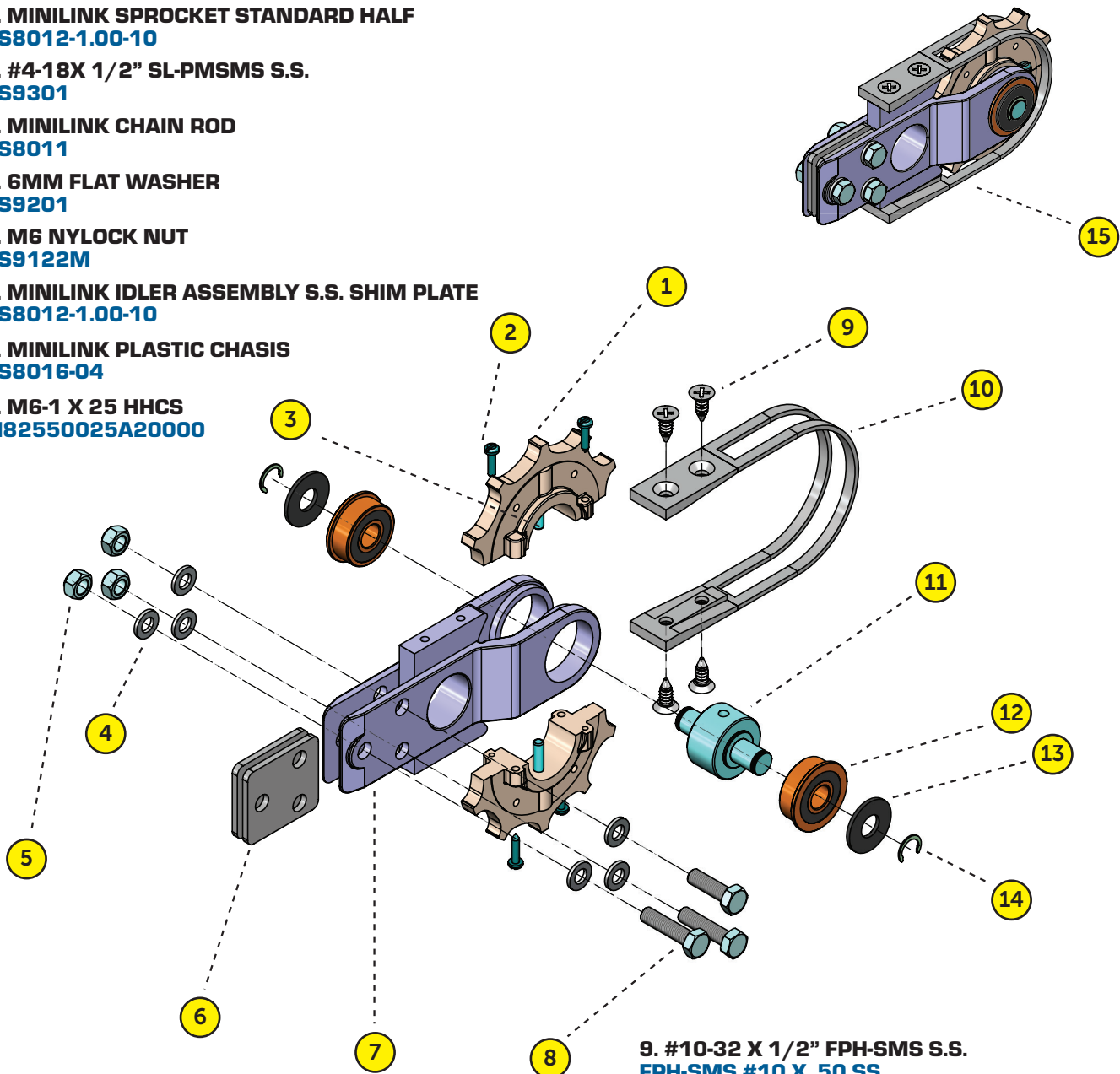
**4. 6MM FLAT WASHER**  
**DS9201**

**5. M6 NYLOCK NUT**  
**DS9122M**

**6. MINILINK IDLER ASSEMBLY S.S. SHIM PLATE**  
**DS8012-1.00-10**

**7. MINILINK PLASTIC CHASIS**  
**DS8016-04**

**8. M6-1 X 25 HHCS**  
**M82550025A20000**



**9. #10-32 X 1/2" FPH-SMS S.S.**  
**FPH-SMS #10 X .50 SS**

**10. SS MINILINK CHAIN GUIDE STRAP**  
**DS8089**

**11. MINILINK IDLER SHAFT**  
**DS8033**

**12. 3/8" I.D. S.S. FLANGE BEARING**  
**SFR6AZZW37 FM102 - ??????????**

**13. .385" I.D. X 1.0" O.D. X .062" T PVC WASHER**  
**5619-58-62**

**14. 3/8" EXTERNAL CRESCENT RING SS**  
**DS9040-C-37SS**

**15. MINILINK STANDARD IDLER | FULL ASSEMBLY**  
**DA8016**



# LOW PROFILE IDLER

KEY: C = CENTER • LH = LEFT HAND • RH = RIGHT HAND • MSG = MOVING SIDE GUIDE • (PU) = POLYURETHANE • (S) = SANTOPRENE  
• (A) = ACETAL • (PP) = POLYPROPYLENE

**1. LOW PROFILE IDLER SIDE PLATE**

**RIGHT - DS4332M**

**LEFT - DS4331M**

**2. LOW PROFILE IDLER SHAFT**

**DS4333-0613XR00**

**3. LOW PROFILE IDLER HORSESHOE**

**CAST ALUMINUM PLATED - DS4345-P**

**MOLDED - DS4345-M**

**MACHINED - DS4345-MACH**

**4. M8-1.25 X 40 HHCS SS**

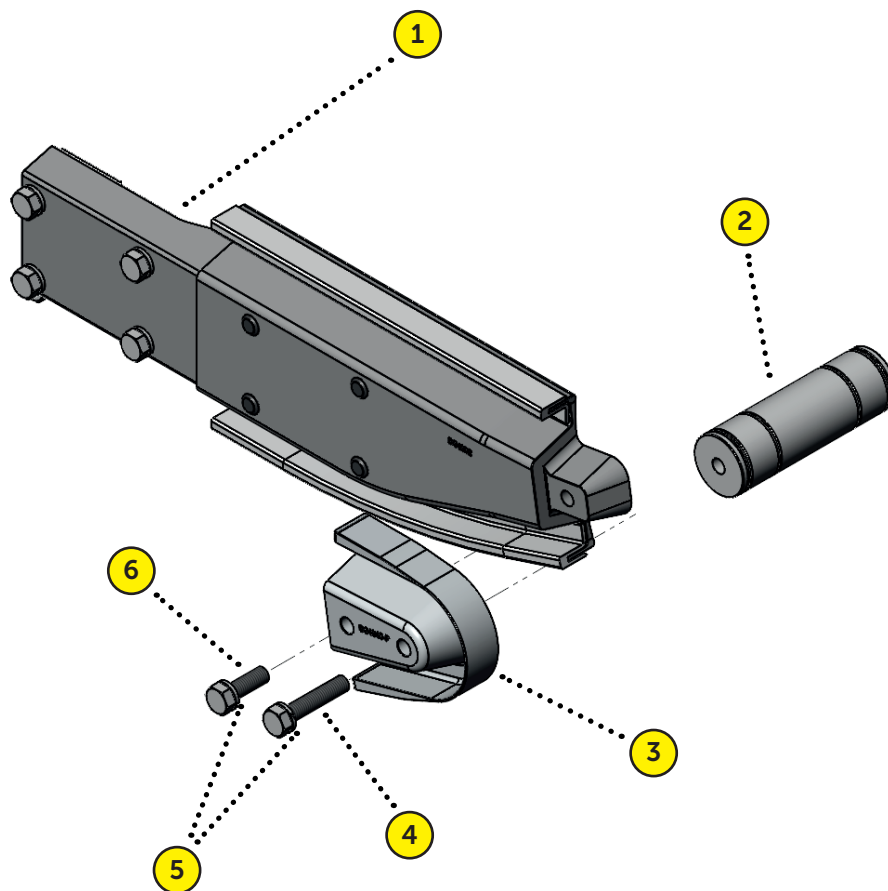
**69575**

**5. 8MM LOCK WASHER**

**DS9103M**

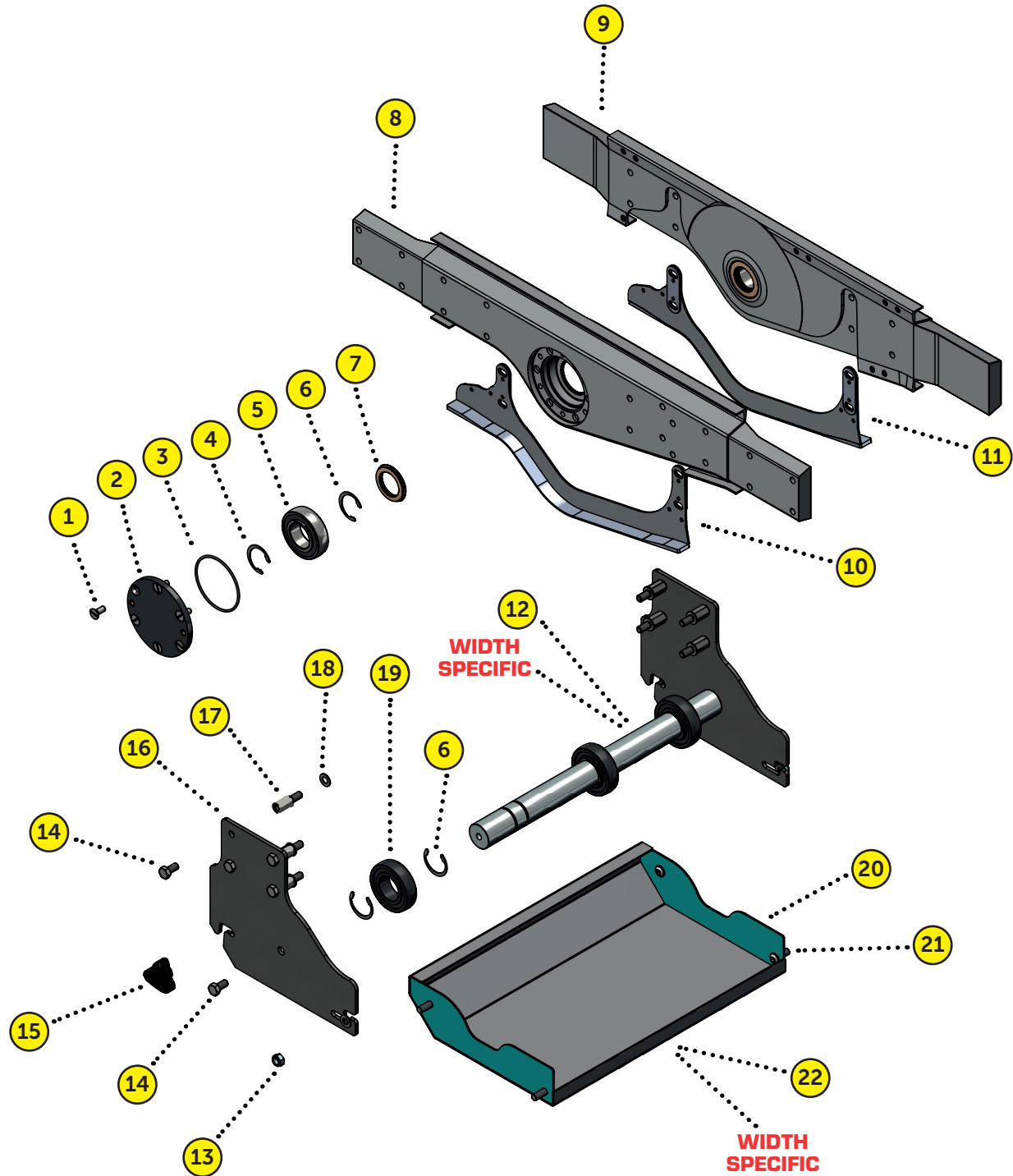
**6. M8-1.25 X 25 HHCS SS**

**DS9405M**



# INTERMEDIATE DRIVE COMPONENTS

KEY: C = CENTER • LH = LEFT HAND • RH = RIGHT HAND • MSG = MOVING SIDE GUIDE • (PU) = POLYURETHANE • (S) = SANTOPRENE  
• (A) = ACETAL • (PP) = POLYPROPYLENE





# INTERMEDIATE DRIVE COMPONENTS

KEY: C = CENTER • LH = LEFT HAND • RH = RIGHT HAND • MSG = MOVING SIDE GUIDE • (PU) = POLYURETHANE • (S) = SANTOPRENE  
• (A) = ACETAL • (PP) = POLYPROPYLENE

**1. 1/4-20 X 5/8" FHCS  
FEC5001**

**2. END CAP CLOSED  
DS4133**

**3. O-RING  
DS9045-03-146**

**4. 1 1/4" DIA. SHAFT CRESCENT RING  
DS9040-2000-125**

**5. 1-1/4 BEARING  
STEEL - DS4251-02  
STAINLESS STEEL - DS4251-02SS**

**6. 1 1/4" DIA. SHAFT CRESCENT RING  
DS9040-2000-125**

**7. SANTOPRENE SEAL  
DS4039S87**

**8. INTERMEDIATE DRIVE LEFT HAND SIDEPLATE  
DAI4245L**

**9. INTERMEDIATE DRIVE RIGHT HAND SIDEPLATE  
DAI4245R**

**10. CHAIN GUIDE ASSEMBLY (LEFT)  
INCLUDED WITH LEFT HAND SIDE PLATE**

**11. CHAIN GUIDE ASSEMBLY (RIGHT)  
INCLUDED WITH RIGHT HAND SIDE PLATE**

**12. INTERMEDIATE DRIVE SHAFT  
DS4239M-CWXR00 (CW=CHAIN WIDTH)**

**13. M8 NYLOCK NUT  
DS9120-02M**

**14. M8-1.25 X 13 HHCS  
DS9402M**

**15. KNOB 3 PRONG M8 FEMALE THREADS  
2776K640**

**16. MID MOUNTING PLATE  
DS4236-R01**

**17. STANDOFF - 21MM STAINLESS MALE/FEMALE  
DS3355M**

**18. 8MM FLAT WASHER  
DS9200**

**19. 1-1/4 PLASTIC BEARING  
DS4251PL**

**20. MID GUARD SIDEPLATE  
DS4238**

**21. M8-1.25 X 20 BHCS  
DSMB2580020A20000**

**22. MID GUARD BODY  
DSDS4237-CW (CW=CHAIN WIDTH)**



# **DRIVES & IDLERS**

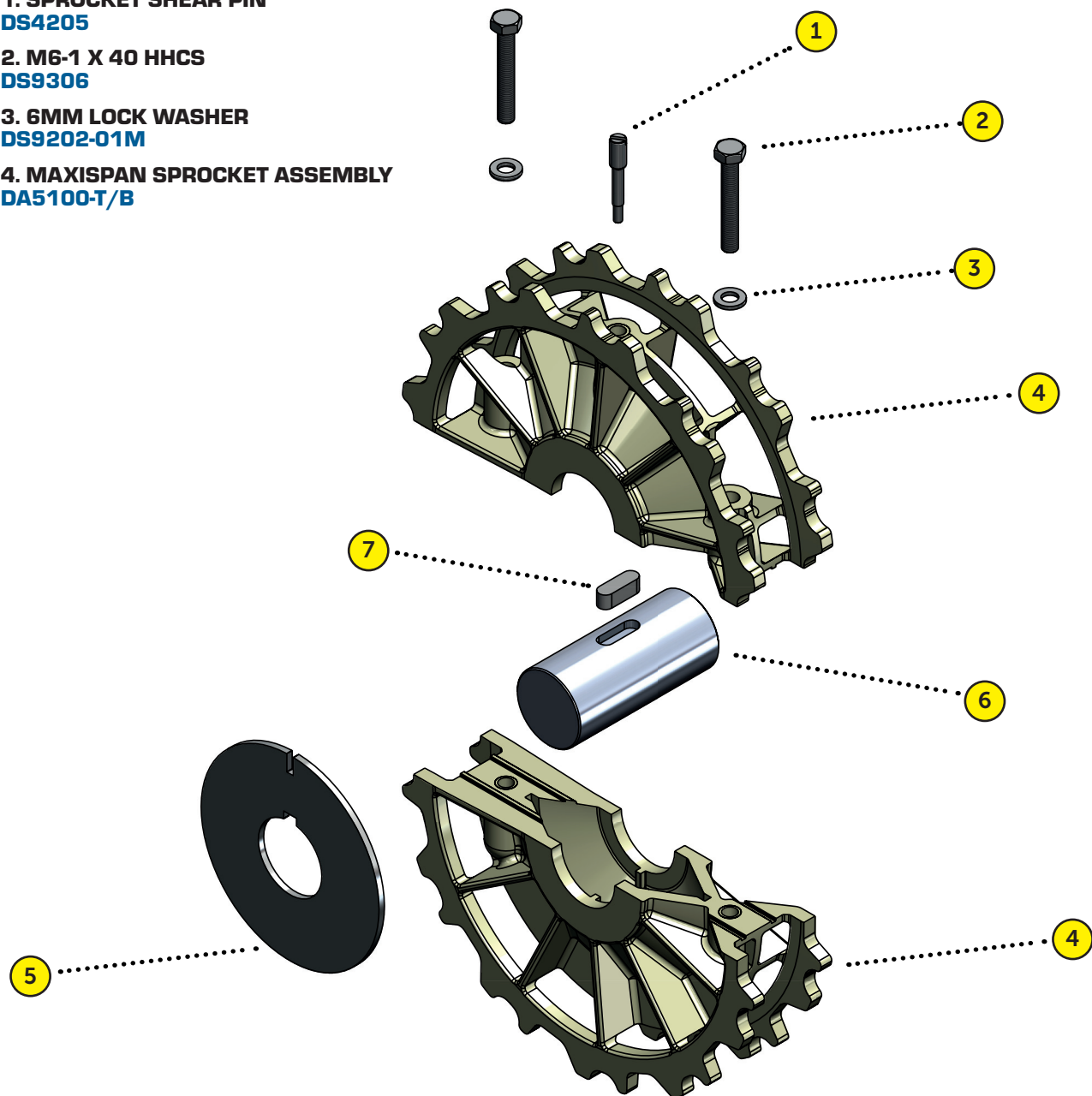
## **[SHAFTS & SPROCKETS]**



# MAXISPAN 50 MM SPROCKET ASSEMBLY

KEY: C = CENTER • LH = LEFT HAND • RH = RIGHT HAND • MSG = MOVING SIDE GUIDE • (PU) = POLYURETHANE • (S) = SANTOPRENE  
• (A) = ACETAL • (PP) = POLYPROPYLENE

- 1. SPROCKET SHEAR PIN**  
**DS4205**
- 2. M6-1 X 40 HHCS**  
**DS9306**
- 3. 6MM LOCK WASHER**  
**DS9202-01M**
- 4. MAXISPAN SPROCKET ASSEMBLY**  
**DA5100-T/B**



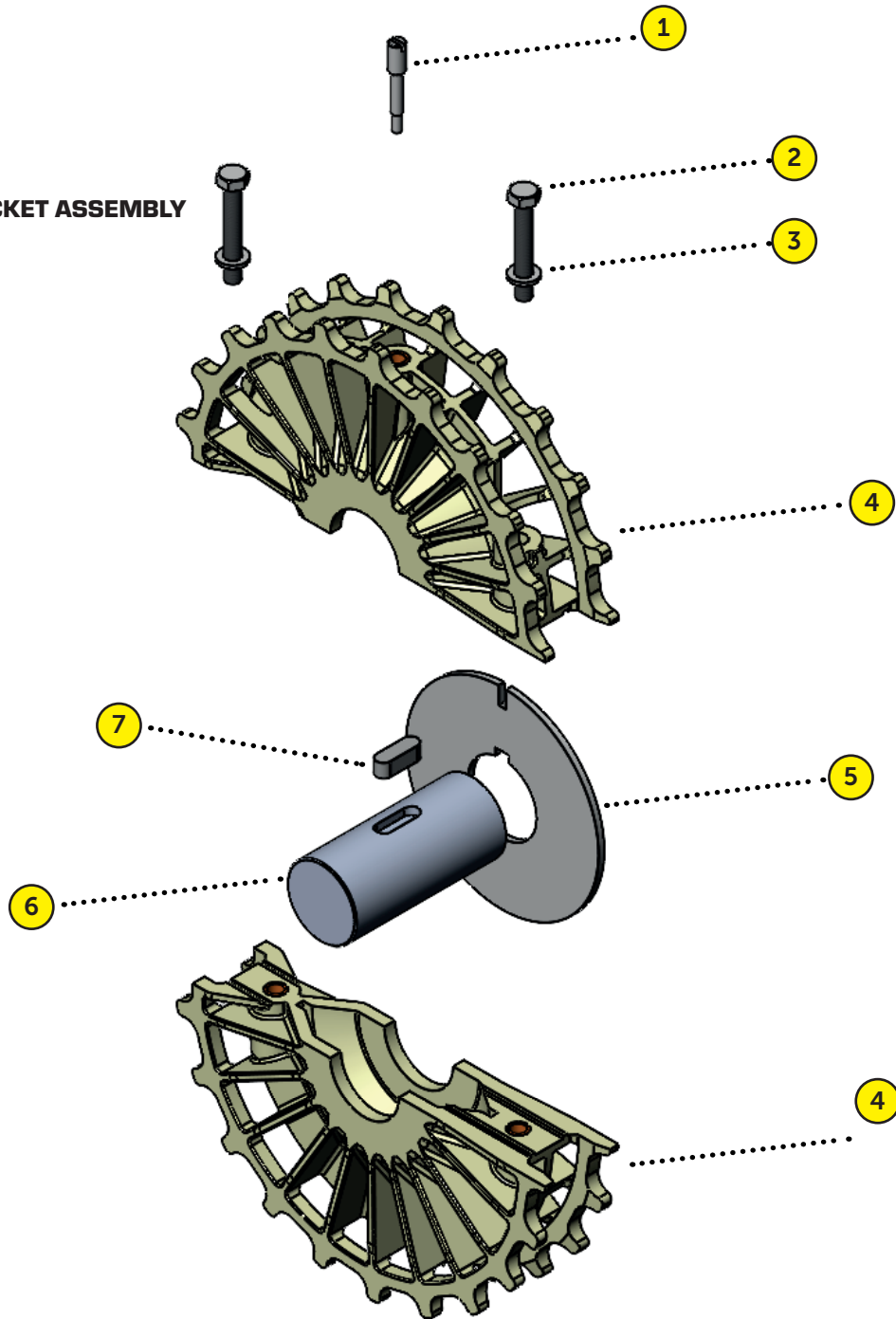
- 5. SPROCKET REINFORCEMENT PLATE**  
**DS4203-03**
- 6. SPROCKET SHAFT**  
**DEPENDENT ON CHAIN WIDTH**
- 7. 1/4 X 1/4 X 3/4 KEY**  
**DS9170-250-750-01**

**FULL ASSEMBLY | DA5100-01**  
[ FULL ASSEMBLY DOES NOT INCLUDE SHAFT ]

# MULTISPAN SUPERTIGHT 25MM SPROCKET ASSEMBLY

KEY: C = CENTER • LH = LEFT HAND • RH = RIGHT HAND • MSG = MOVING SIDE GUIDE • (PU) = POLYURETHANE • (S) = SANTOPRENE  
• (A) = ACETAL • (PP) = POLYPROPYLENE

- 1. SPROCKET SHEAR PIN  
DS4205
- 2. M6-1 X 40 HHCS  
DS9306
- 3. 6MM LOCK WASHER  
DS9202-01M
- 4. 25MM MULTISPAN SPROCKET ASSEMBLY  
DA4201-T/B



- 5. SPROCKET REINFORCEMENT PLATE  
DS4203-03
- 6. SPROCKET SHAFT  
DEPENDENT ON CHAIN WIDTH
- 7. 1/4 X 1/4 X 3/4 KEY  
DS9170-250-750-01

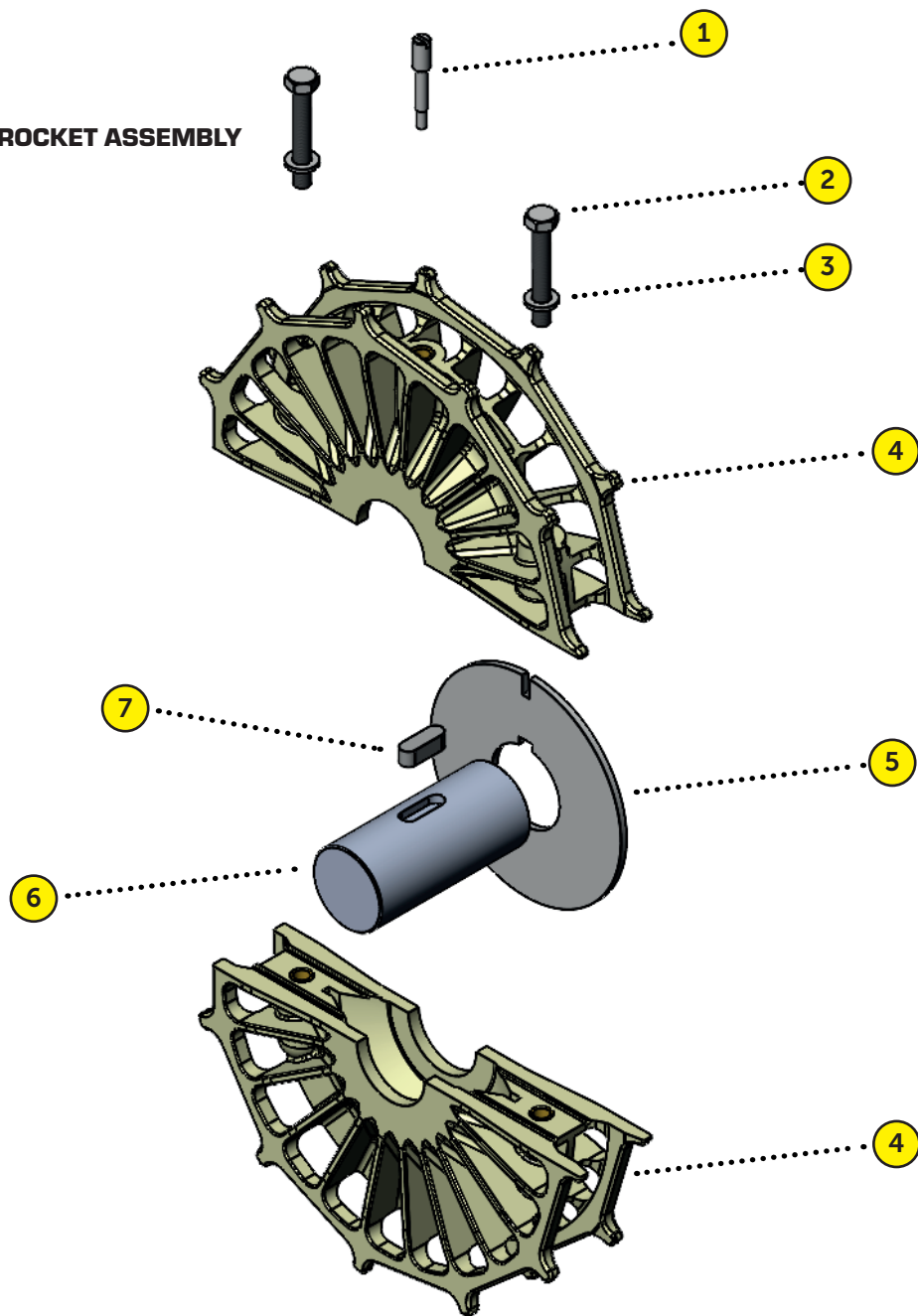
**FULL ASSEMBLY | DA4201-01**  
[ FULL ASSEMBLY DOES NOT INCLUDE SHAFT ]



# MULTISPAN SUPERTIGHT 50MM SPROCKET ASSEMBLY

KEY: C = CENTER • LH = LEFT HAND • RH = RIGHT HAND • MSG = MOVING SIDE GUIDE • (PU) = POLYURETHANE • (S) = SANTOPRENE  
• (A) = ACETAL • (PP) = POLYPROPYLENE

- 1. SPROCKET SHEAR PIN  
DS4205
- 2. M6-1 X 40 HHCS  
DS9306
- 3. 6MM LOCK WASHER  
DS9202-01M
- 4. 50MM MULTISPAN SPROCKET ASSEMBLY  
DA4202-T/B



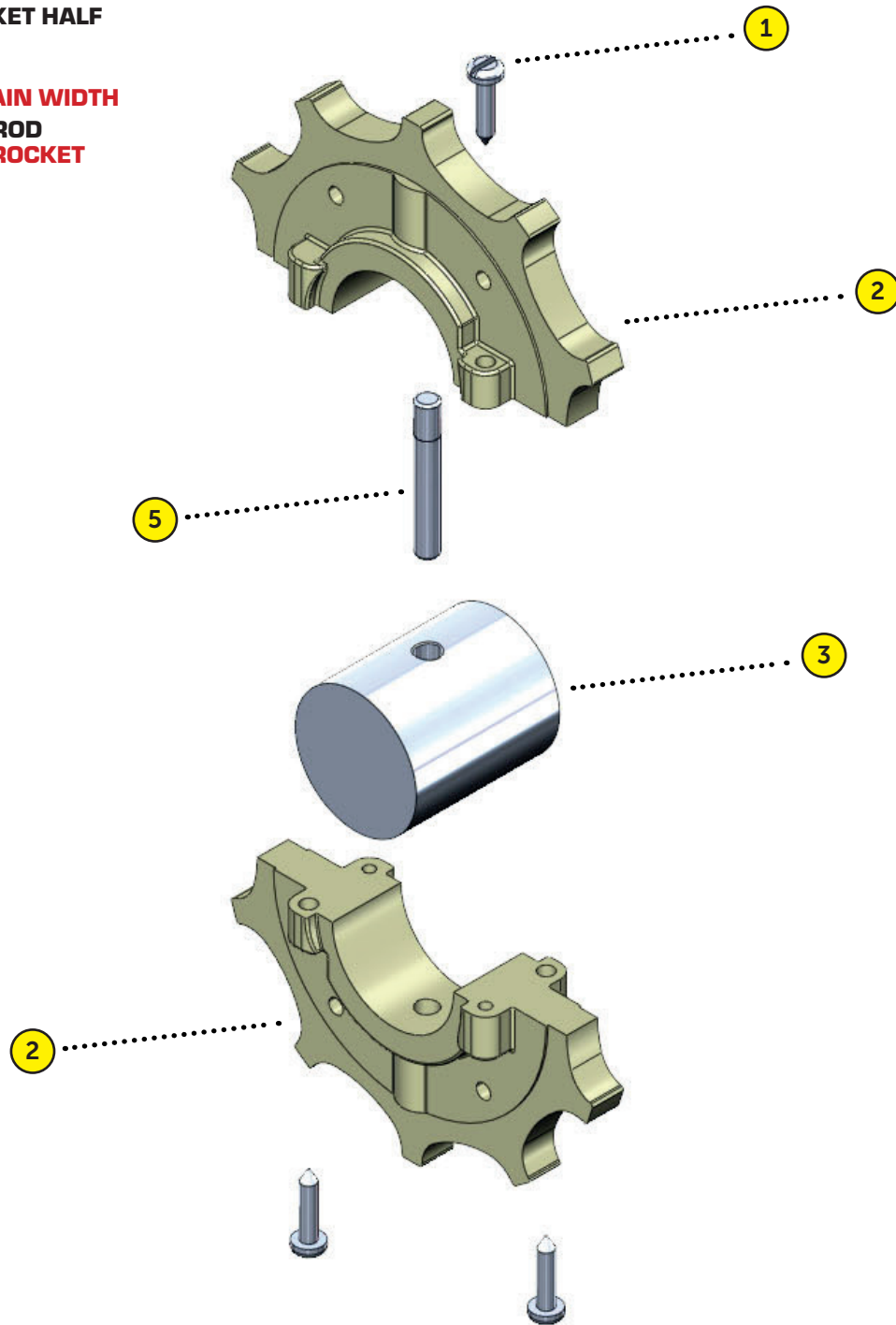
- 5. SPROCKET REINFORCEMENT PLATE  
DS4203-03
- 6. SPROCKET SHAFT  
DEPENDENT ON CHAIN WIDTH
- 7. 1/4 X 1/4 X 3/4 KEY  
DS9170-250-750-01

**FULL ASSEMBLY | DA4202-01**  
[ FULL ASSEMBLY DOES NOT INCLUDE SHAFT ]

# MINILINK 25MM SPROCKET ASSEMBLY

KEY: C = CENTER • LH = LEFT HAND • RH = RIGHT HAND • MSG = MOVING SIDE GUIDE • (PU) = POLYURETHANE • (S) = SANTOPRENE  
• (A) = ACETAL • (PP) = POLYPROPYLENE

- 1. 4-18 X 0.50 SL-PHSMS SS  
DS9301
- 2. MINILINK SPROCKET HALF  
DS8012-100
- 3. SPROCKET SHAFT  
DEPENDENT ON CHAIN WIDTH
- 5. MINILINK CHAIN ROD  
INCLUDED WITH SPROCKET



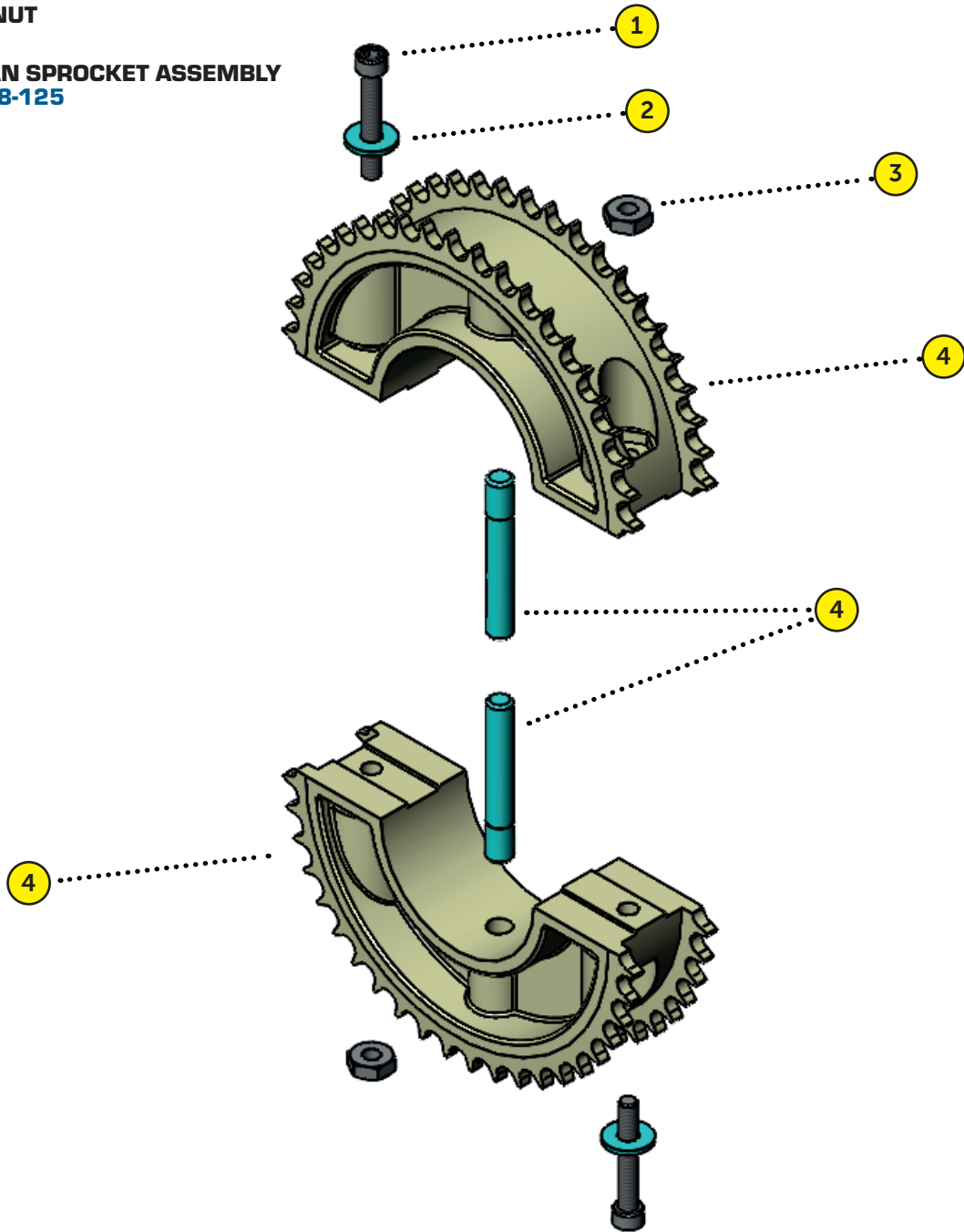
**FULL ASSEMBLY | DA8012-1.00-11**  
[ FULL ASSEMBLY DOES NOT INCLUDE SHAFT ]



# MICROSPAN 1.25" BORE SPROCKET ASSEMBLY

KEY: C = CENTER • LH = LEFT HAND • RH = RIGHT HAND • MSG = MOVING SIDE GUIDE • (PU) = POLYURETHANE • (S) = SANTOPRENE  
• (A) = ACETAL • (PP) = POLYPROPYLENE

- 1. 4-40 X 0.75 SHCS SS  
933153
- 2. #4 FLAT WASHER  
DS9098
- 3. 4-40 HEX NUT  
DS9119
- 4. MICROSPAN SPROCKET ASSEMBLY  
DB6600-2008-125

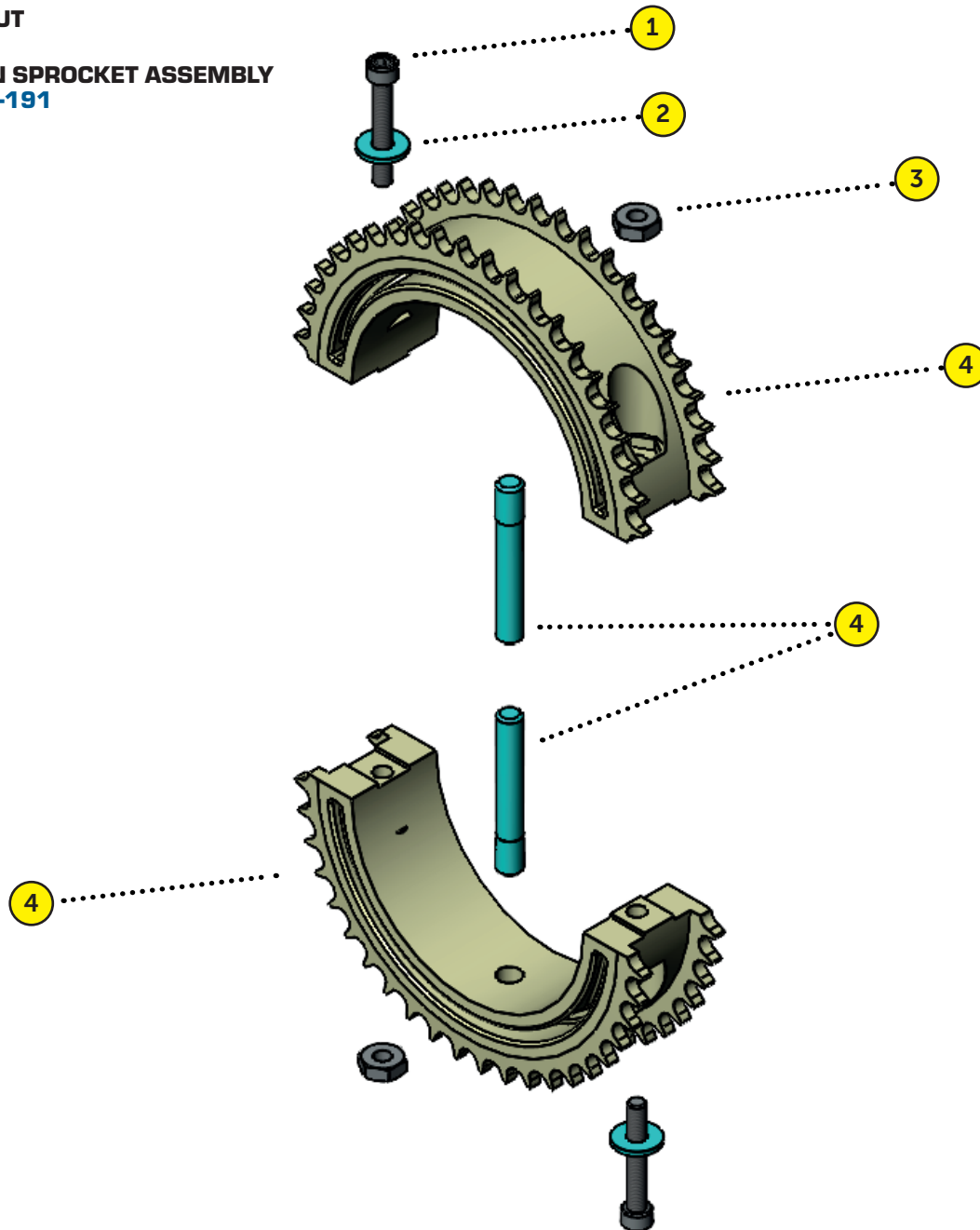


**FULL ASSEMBLY | DA6600-2008-125**  
[ FULL ASSEMBLY DOES NOT INCLUDE SHAFT ]

# MICROSPAN 1.91" BORE SPROCKET ASSEMBLY

KEY: C = CENTER • LH = LEFT HAND • RH = RIGHT HAND • MSG = MOVING SIDE GUIDE • (PU) = POLYURETHANE • (S) = SANTOPRENE  
• (A) = ACETAL • (PP) = POLYPROPYLENE

- 1. 4-40 X 0.75 SHCS SS  
933153
- 2. #4 FLAT WASHER  
DS9098
- 3. 4-40 HEX NUT  
DS9119
- 4. MICROSPAN SPROCKET ASSEMBLY  
DB6600-2008-191



**FULL ASSEMBLY | DA6600-2008-191**  
[ FULL ASSEMBLY DOES NOT INCLUDE SHAFT ]





# MOLDED MICROSPAN 20MM BORE SPROCKET ASSEMBLY

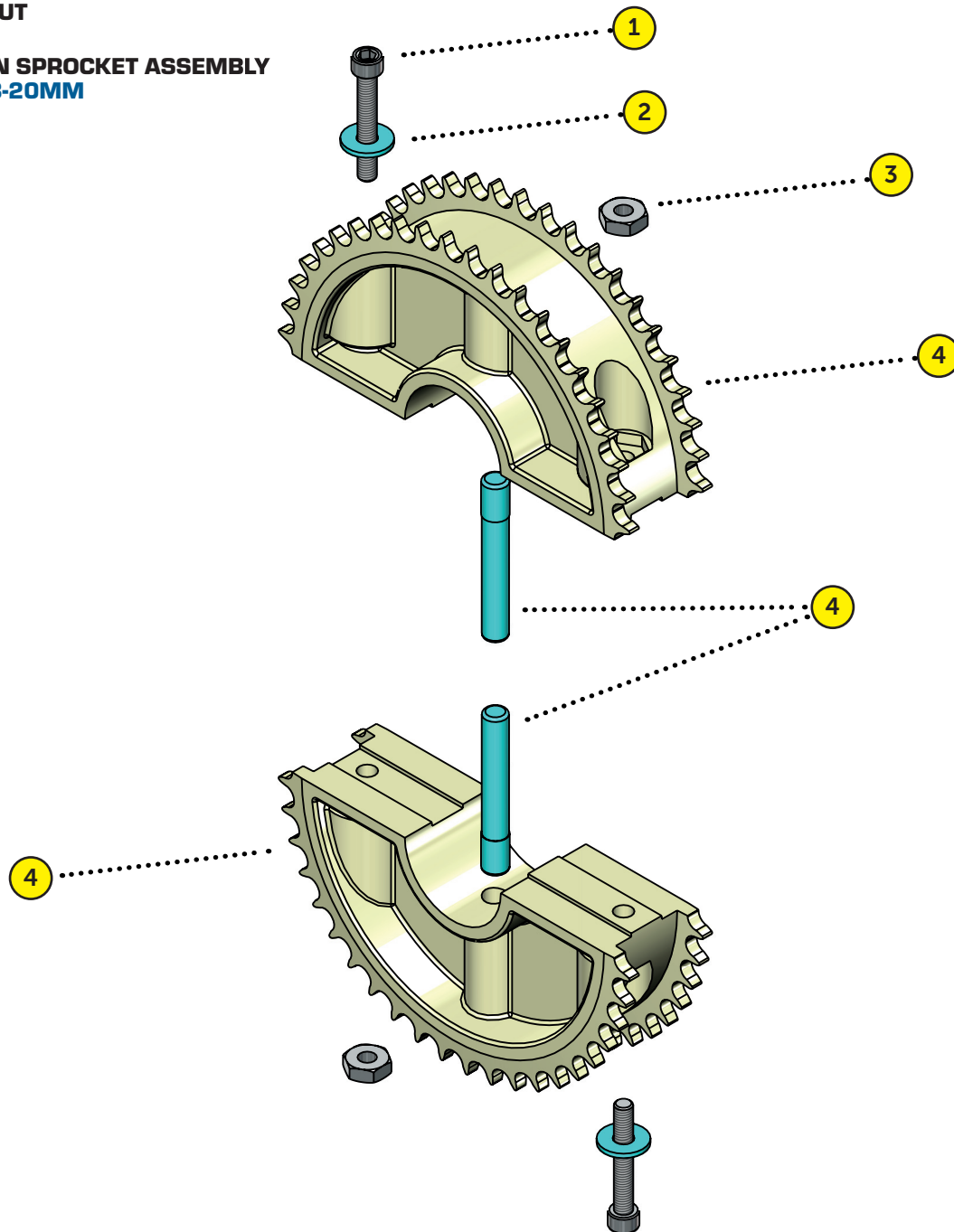
KEY: C = CENTER • LH = LEFT HAND • RH = RIGHT HAND • MSG = MOVING SIDE GUIDE • (PU) = POLYURETHANE • (S) = SANTOPRENE  
• (A) = ACETAL • (PP) = POLYPROPYLENE

**1. 4-40 X 0.75 SHCS SS  
933153**

**2. #4 FLAT WASHER  
DS9098**

**3. 4-40 HEX NUT  
DS9119**

**4. MICROSPAN SPROCKET ASSEMBLY  
DB6600-2008-20MM**

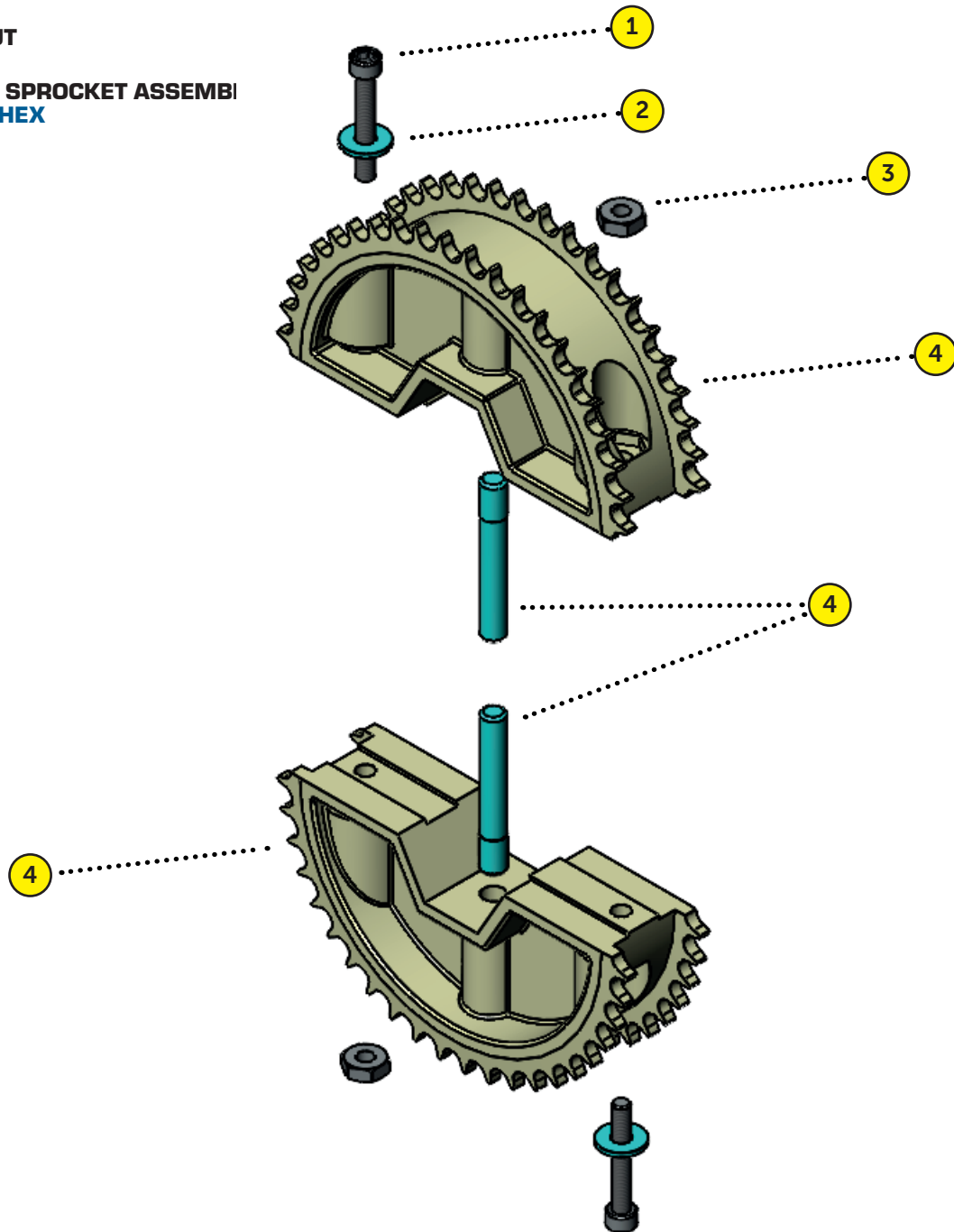


**FULL ASSEMBLY | DA6600-2008-20MM**  
[ FULL ASSEMBLY DOES NOT INCLUDE SHAFT ]

# MICROSPAN HEX BORE SPROCKET ASSEMBLY

KEY: C = CENTER • LH = LEFT HAND • RH = RIGHT HAND • MSG = MOVING SIDE GUIDE • (PU) = POLYURETHANE • (S) = SANTOPRENE  
• (A) = ACETAL • (PP) = POLYPROPYLENE

- 1. 4-40 X 0.75 SHCS SS**  
**933153**
- 2. #4 FLAT WASHER**  
**DS9098**
- 3. 4-40 HEX NUT**  
**DS9119**
- 4. MICROSPAN SPROCKET ASSEMBLY**  
**DB6600-2008-HEX**



**FULL ASSEMBLY | DA6600-2008-HEX**  
[ FULL ASSEMBLY DOES NOT INCLUDE SHAFT ]

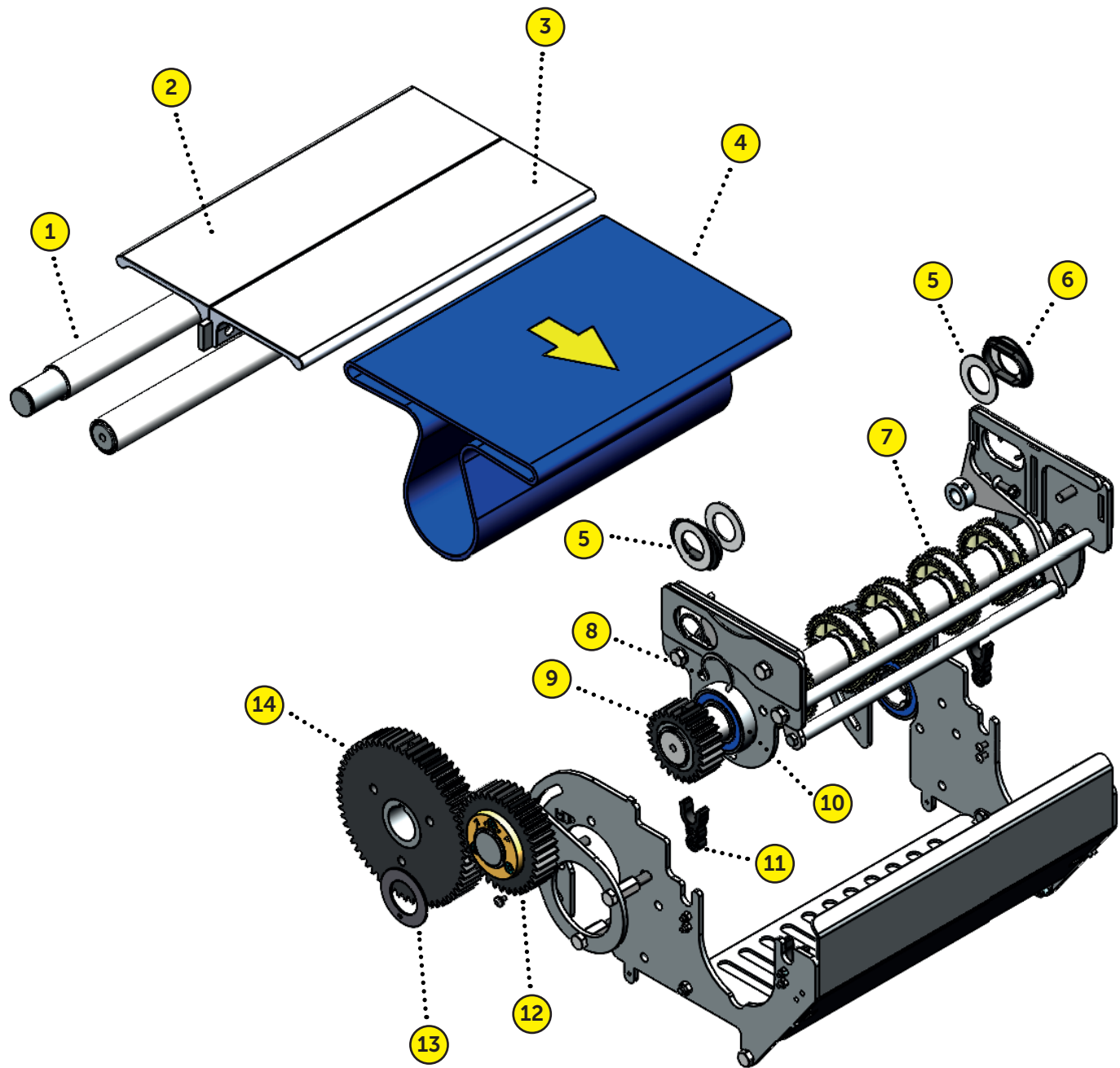
A large rectangular area with a background of thin, light gray diagonal lines. A horizontal yellow bar with a diagonal striped pattern is centered within this area, containing the main title text.

# **TRANSFERS**

## **[COMPONENTS]**

# MICROSPAN TRANSFER TRANSFER ASSEMBLY

KEY: C = CENTER • LH = LEFT HAND • RH = RIGHT HAND • MSG = MOVING SIDE GUIDE • (PU) = POLYURETHANE • (S) = SANTOPRENE  
• (A) = ACETAL • (PP) = POLYPROPYLENE





# MICROSPAN TRANSFER TRANSFER ASSEMBLY

KEY: C = CENTER • LH = LEFT HAND • RH = RIGHT HAND • MSG = MOVING SIDE GUIDE • (PU) = POLYURETHANE • (S) = SANTOPRENE  
• (A) = ACETAL • (PP) = POLYPROPYLENE

- 1. UHMW TUBE SLEEVE | 302 MM LONG**  
**DB6600-1710**
- 2. HIGH SPEED MST NOSEBAR | 1290 MM PLATED**  
**DA6600-1704-03-P**
- 3. PLATED EXTRUSION NOSEBAR | 1290 MM LONG**  
**DA6600-1704-02-P**

*THESE ARE STANDARD WIDTHS. IF YOU NEED SOMETHING DIFFERENT PLEASE CONTACT THE SERVICE PARTS DEPARTMENT WITH THE REQUIRED DIMENSIONS.*

- 4. MICROSPAN CHAIN**  
**SEE MICROSPAN CHAIN PAGE # 28**
- 5. WASHER | 1" THRUST WASHER PK (10)**  
**95647A149-A**
- 6. MICROSPAN TENSIONER END BUSHING MOLDED**  
**DS6600-1717M**
- 7. MICROSPAN SPROCKET ASSEMBLY**  
**PLEASE REFER TO MICROSPAN SPROCKET SECTION PAGE # 47-50**
- 8. 1 1/4" CRESCENT RING | STAINLESS STEEL**  
**DS9040-2000-125**
- 9. SPUR GEAR | 25 TOOTH - 2.5M-20**  
**DB6600-25T2.5M20-01**
- 10. 1 1/4" BEARING WITH EXTENDED TAB | STAINLESS STEEL**  
**DS4251-02SS**
- 11. MICROSPAN TRANSFER ROD CLIP MOLDED**  
**DS6600-1743M**
- 12. SPUR GEAR | 36 TOOTH - 2.5M-20**  
**DA6600-36T2.5M20**
- 13. IGLIDE - A200 THRUST WASHER**  
**GTM-3254-01**
- 14. SPUR GEAR | 60 TOOTH - 2.5M-20**  
**DB6600-60T2.5M20-01**

# MICROSPAN TRANSFER COVER ASSEMBLY

KEY: C = CENTER • LH = LEFT HAND • RH = RIGHT HAND • MSG = MOVING SIDE GUIDE • (PU) = POLYURETHANE • (S) = SANTOPRENE  
 • (A) = ACETAL • (PP) = POLYPROPYLENE

**1. M8-1.25 X 22.2MM M/F STANDOFF SS  
DS3355M**

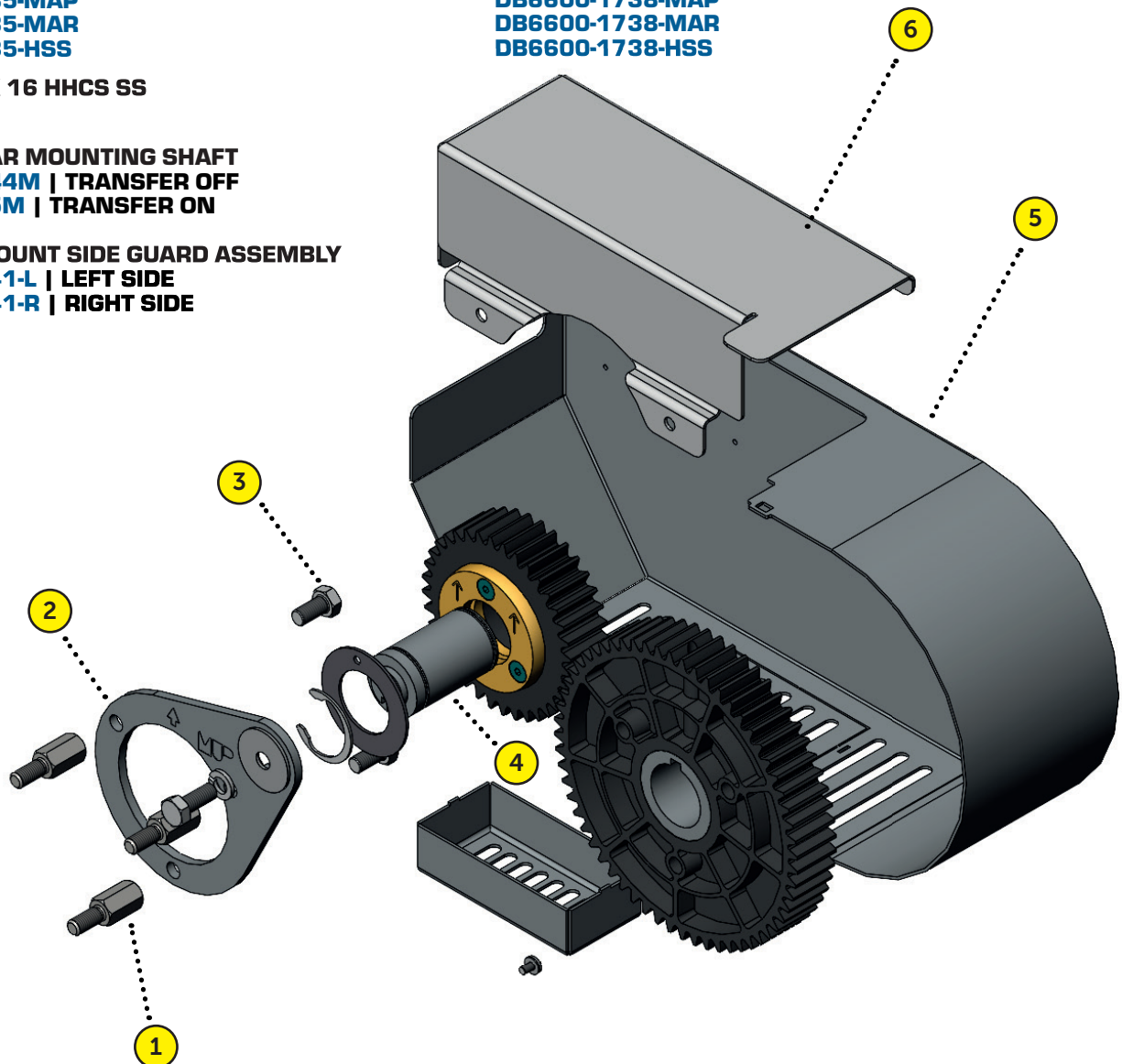
**2. INTERMEDIATE GEAR FIXED PLATE (TRANSFER OFF)**  
**DB6600-1735-MUP**  
**DB6600-1735-MUR**  
**DB6600-1735-MUR10**  
**DB6600-1735-MAP**  
**DB6600-1735-MAR**  
**DB6600-1735-HSS**

**3. M8-1.25 X 16 HHCS SS  
DS9402M**

**4. FIXED GEAR MOUNTING SHAFT**  
**DB6600-1744M | TRANSFER OFF**  
**DB660-1745M | TRANSFER ON**

**5. DAMST MOUNT SIDE GUARD ASSEMBLY**  
**DB6600-1741-L | LEFT SIDE**  
**DB6600-1741-R | RIGHT SIDE**

**2. INTERMEDIATE GEAR FIXED PLATE (TRANSFER ON)**  
**DB6600-1738-MUP**  
**DB6600-1738-MUR**  
**DB6600-1738-MUR10**  
**DB6600-1738-MAP**  
**DB6600-1738-MAR**  
**DB6600-1738-HSS**



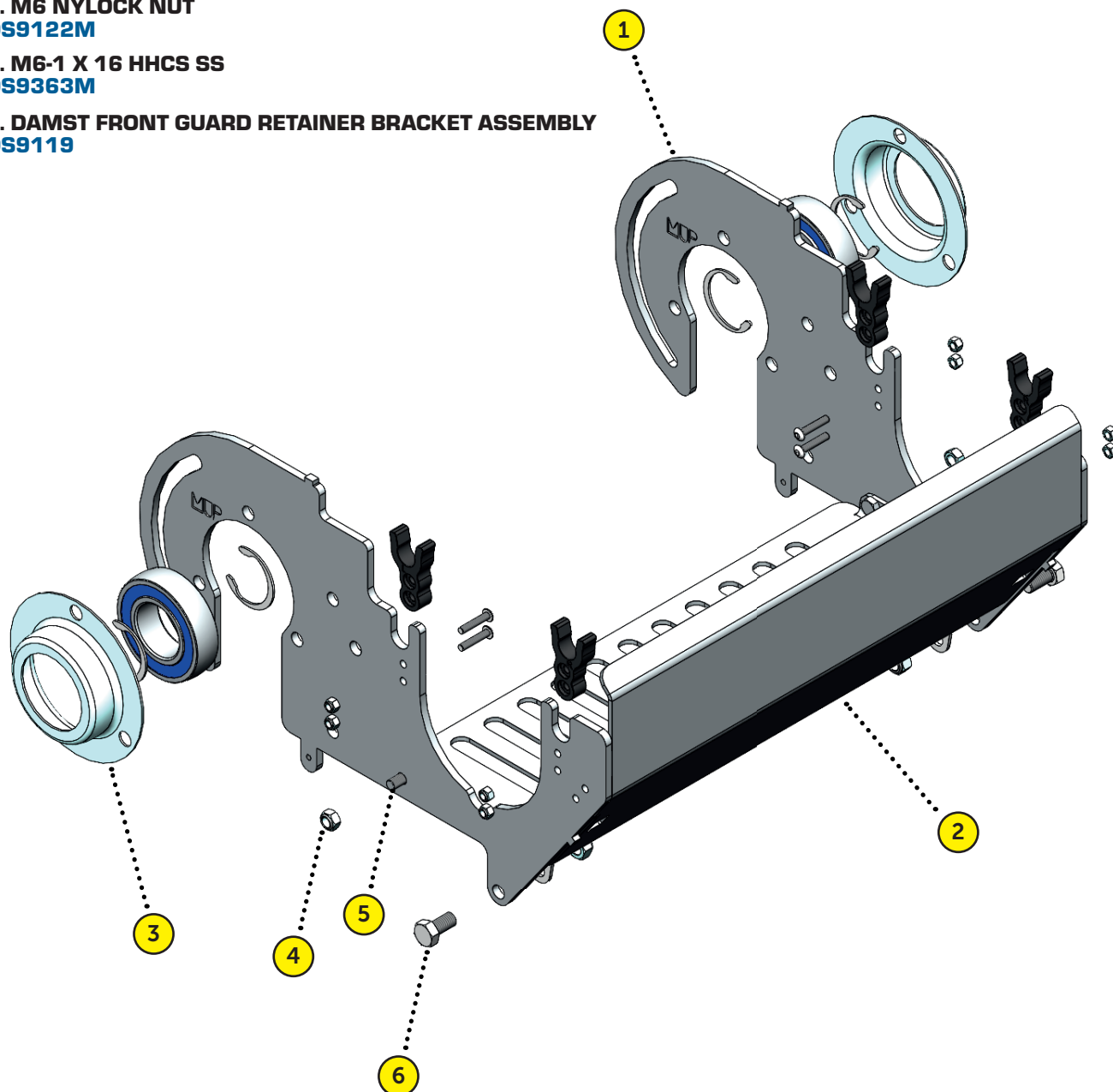
**6. SIDE GUARD CHASSIS (X=(R) RIGHT OR (L) LEFT)**  
**DB6600-1746-MUP-X**  
**DB6600-1746-MUR-X**  
**DB6600-1746-MUR10-X**  
**DB6600-1746-MAP-X**  
**DB6600-1746-MAR-X**  
**DB6600-1746-HSS-X**



# MICROSPAN TRANSFER MOUNT CHASSIS

KEY: C = CENTER • LH = LEFT HAND • RH = RIGHT HAND • MSG = MOVING SIDE GUIDE • (PU) = POLYURETHANE • (S) = SANTOPRENE  
• (A) = ACETAL • (PP) = POLYPROPYLENE

- 1. DBMST SIDE MOUNT PLATE MUP**  
**DB6600-1709-MUP-R10**
- 2. MICROSPAN TRANSFER FRONT GUARD, 1203**  
**DBMST-FG-1203-FG-01**
- 3. BEARING HOUSING SUB ASSEMBLY 1.25 BORE**  
**DS4061**
- 4. M6 NYLOCK NUT**  
**DS9122M**
- 5. M6-1 X 16 HHCS SS**  
**DS9363M**
- 6. DAMST FRONT GUARD RETAINER BRACKET ASSEMBLY**  
**DS9119**





# **GEAR MOTOR**

## **[COMPONENTS]**



# NORD GEARMOTOR ASSEMBLY

KEY: C = CENTER • LH = LEFT HAND • RH = RIGHT HAND • MSG = MOVING SIDE GUIDE • (PU) = POLYURETHANE • (S) = SANTOPRENE  
• (A) = ACETAL • (PP) = POLYPROPYLENE

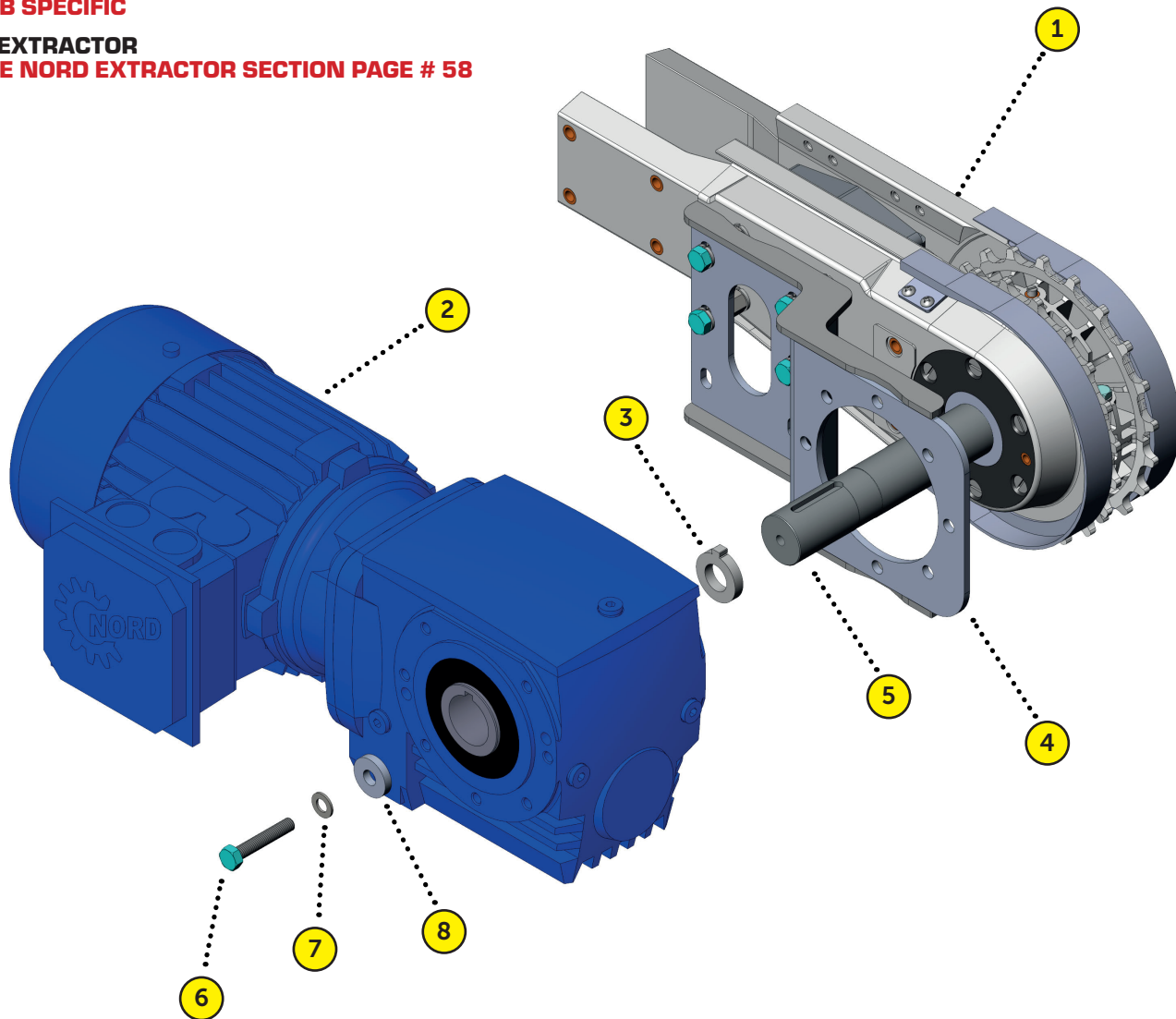
## 1. DRIVE ASSEMBLY

SEE DRIVES & IDLERS SECTION PAGE # 35 - 41

## 2. SPAN TECH SUPPLIED GEAR MOTOR JOB SPECIFIC

## 3. EXTRACTOR

SEE NORD EXTRACTOR SECTION PAGE # 58



4. TORQUE ARM BRACKET  
GBA-0013 - STAINLESS | NORD 2040  
GBA-0014 - STAINLESS | NORD 2050  
JOB SPECIFIC - NON NORD GEARMOTOR

5. SHAFT EXTENSION  
SEE ETCHING ON SHAFT EXTENSION

6. M8-1.25 RETAINING BOLT  
DEPENDENT ON GEARBOX SIZE

7. 8MM FLAT WASHER  
DS9200

8. RETAINING WASHER  
PROVIDED BY GEARMOTOR COMPANY

# NORD GEARMOTOR EXTRACTORS

KEY: C = CENTER • LH = LEFT HAND • RH = RIGHT HAND • MSG = MOVING SIDE GUIDE • (PU) = POLYURETHANE • (S) = SANTOPRENE  
• (A) = ACETAL • (PP) = POLYPROPYLENE



**GXE-N02040**  
.75 BORE EXTRACTOR



**GXE-N02050-12063**  
1.25 BORE EXTRACTOR



**GXE-N02050-12063M**  
30MM BORE EXTRACTOR

# SEW GEARMOTOR ASSEMBLY

KEY: C = CENTER • LH = LEFT HAND • RH = RIGHT HAND • MSG = MOVING SIDE GUIDE • (PU) = POLYURETHANE • (S) = SANTOPRENE  
• (A) = ACETAL • (PP) = POLYPROPYLENE

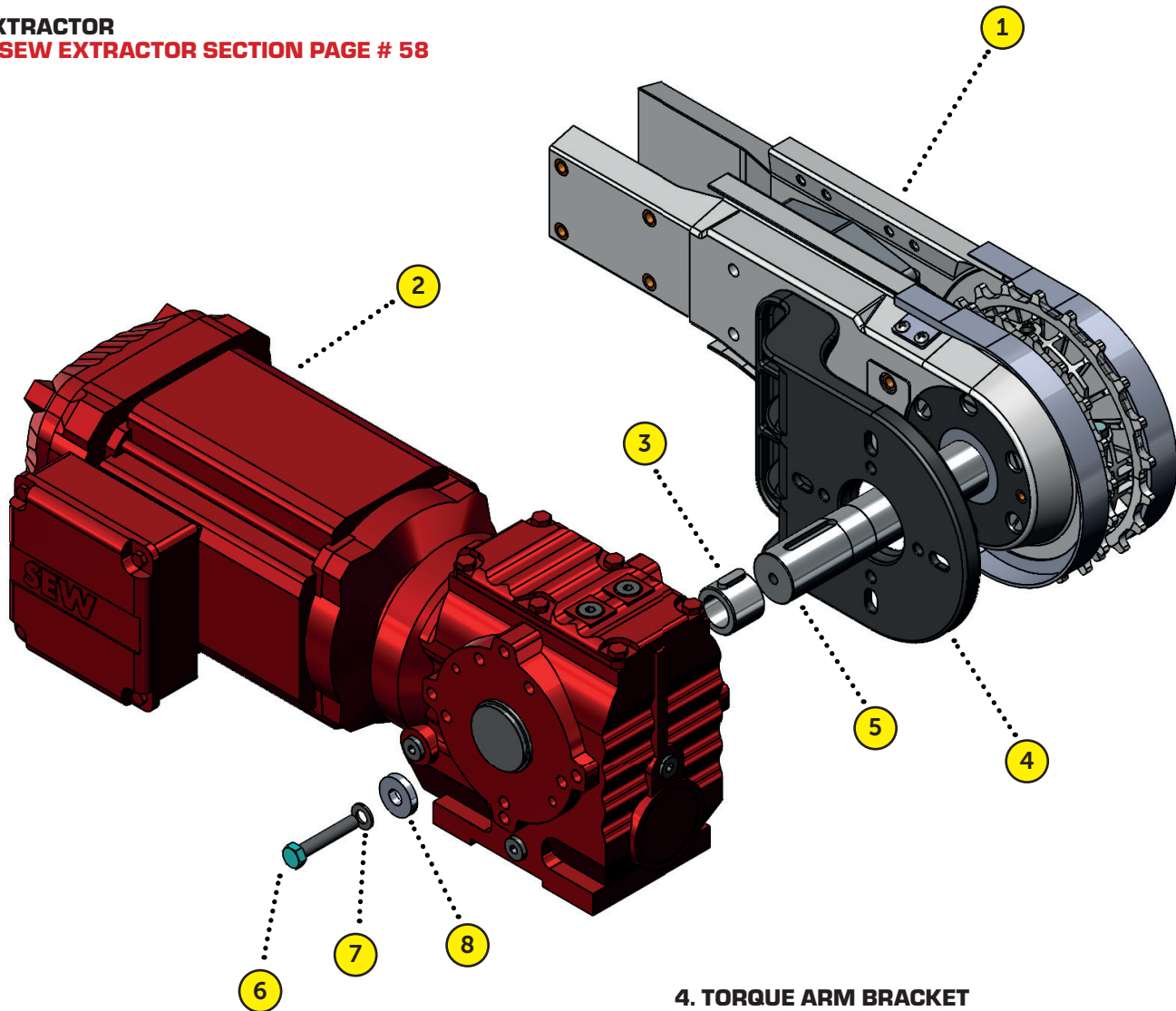
## 1. DRIVE ASSEMBLY

SEE DRIVES & IDLERS SECTION PAGE # 35 - 41

## 2. SPAN TECH SUPPLIED GEAR MOTOR JOB SPECIFIC

## 3. EXTRACTOR

SEE SEW EXTRACTOR SECTION PAGE # 58



4. TORQUE ARM BRACKET  
GBA-0001M - MOLDED | SEW 37/47/57  
GBA-0001 - STAINLESS | SEW 37/47/57  
JOB SPECIFIC - NON SEW GEARMOTOR

5. SHAFT EXTENSION  
SEE ETCHING ON SHAFT EXTENSION

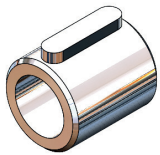
6. M8-1.25 RETAINING BOLT  
DEPENDENT ON GEARBOX SIZE

7. 8MM FLAT WASHER  
DS9200

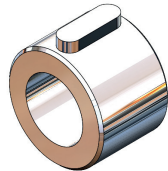
8. RETAINING WASHER  
PROVIDED BY GEARMOTOR COMPANY

# SEW GEARMOTOR EXTRACTORS

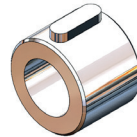
KEY: C = CENTER • LH = LEFT HAND • RH = RIGHT HAND • MSG = MOVING SIDE GUIDE • (PU) = POLYURETHANE • (S) = SANTOPRENE  
 • (A) = ACETAL • (PP) = POLYPROPYLENE



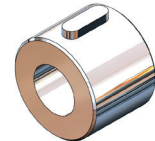
GXA-SA37



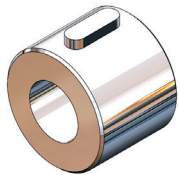
GXA-KA37



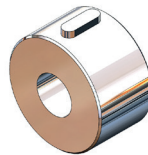
GXA-SA47-SA57



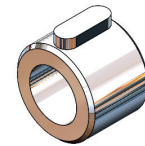
GXA-KA57-KA67



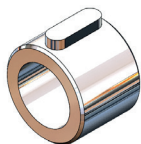
GXA-SA67



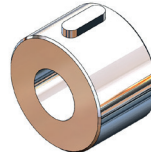
GXA-SA77-KA77



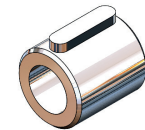
GXA-WA20-WA30



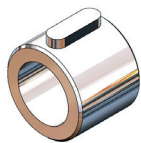
GXA-KA37M



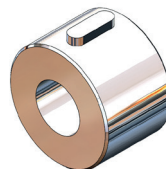
GXA-KA57-KA67M



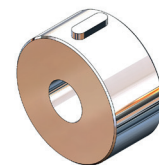
GXA-SA37M



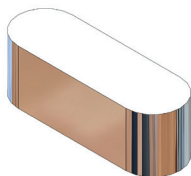
GXA-SA47-SA57M



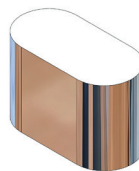
GXA-SA67M



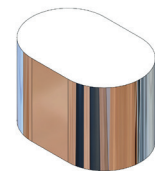
GXA-SA77-KA77M



DS9170-.250-.750-01



DS9170-.375-.750



DS9170-.500-.750



**Main Office | 101 Hilltopper Way, Glasgow KY, 42141**  
**Shipping & Receiving | 725 Roseville Rd, Glasgow KY, 42141**

---

**(270) 651-9166 | Service & Parts**  
**spare\_parts@spantechllc.com**

**[www.spantechconveyors.com](http://www.spantechconveyors.com)**

FOLLOW US ON SOCIAL MEDIA AND KEEP UP WITH ALL OF OUR INNOVATIVE SOLUTIONS

