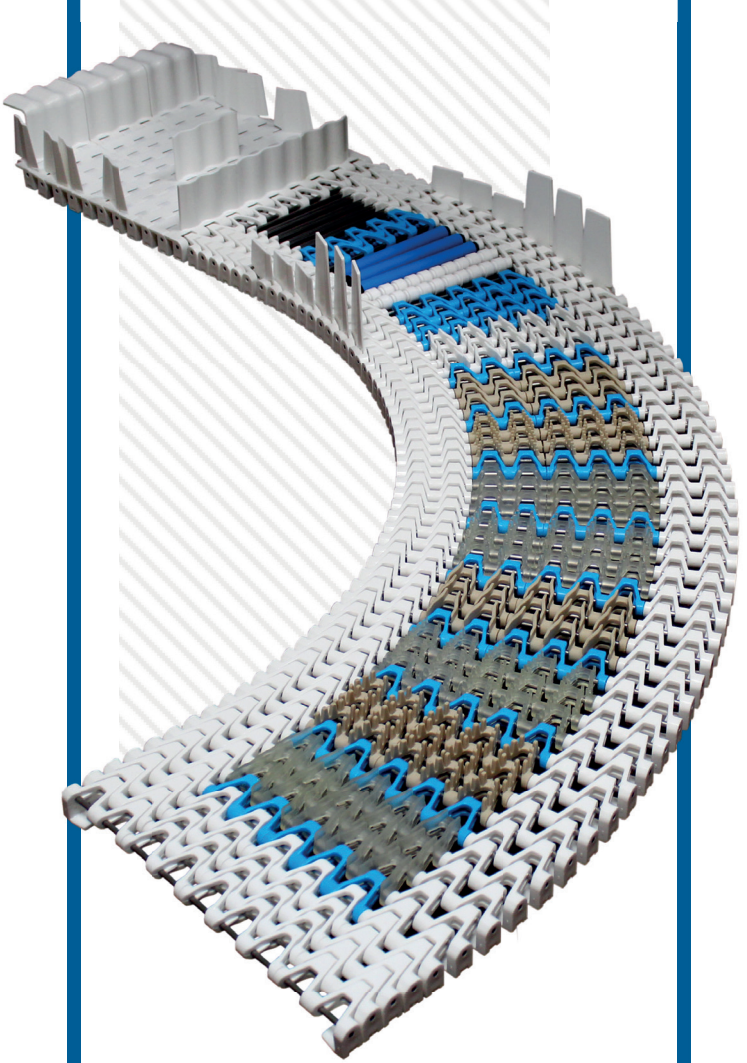


When Chain Reactions Go Right.



Stop buying complete belt or chain assemblies for small worn out sections. Span Tech's modular rebuildable chain components mean easy replacement on your line. Our patented durable chain designs not only set the industry standard for quality and innovation, but also provide solutions applicable to a variety of products and industries.

INNOVATIVE DESIGN



Our chains are completely captured to the conveyor frames, so there is no loose chain on the top or bottom. No more troublesome and dangerous catenaries on your line.

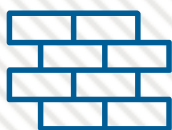
All of our chains are built to last, with modular design, quiet operation and easy cleaning solutions.



SAFE



QUIET



DURABLE

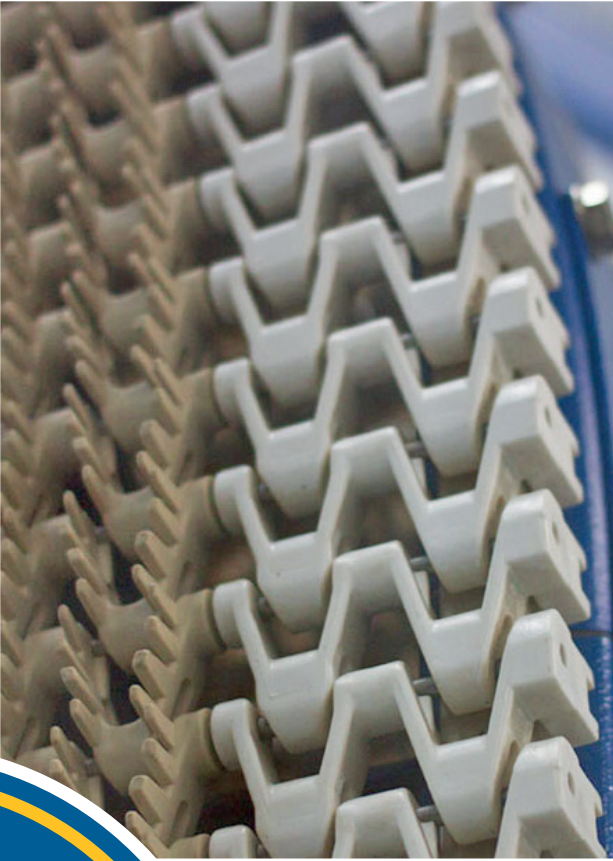


MODULAR

A strong and versatile solution with a compact design. MultiSpan is a flexible answer which can be applied to almost any industry need. Due to the vast variety of chain types, MultiSpan is adaptable to any conveying challenge you may have. There are dozens of MultiSpan Chain links to choose from, such as high friction links, raised, cleated, rollers and tubes for accumulation. MultiSpan Chain is strong, flexible and can handle practically any product including direct food contact.

MULTISPAN





Suggested Industries:

(Not limited to)

Cosmetics, Pharmaceuticals, Food & Beverage Production & Packaging

Applications:

General Conveying

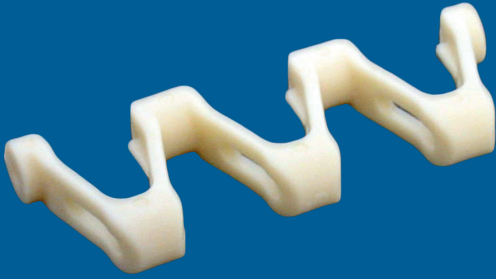
Pitch:

25mm

Widths:

95.6mm - 1205.6mm
(3.76" - 47.46")

TO LEARN MORE VISIT
spantechconveyors.com/product/multispan



Suggested Industries:

(Not limited to)

**Distribution, Manufacturing,
E-Commerce, Packaging, &
Food & Beverage Production**

Applications:

Tight Turns

Pitch:

25mm

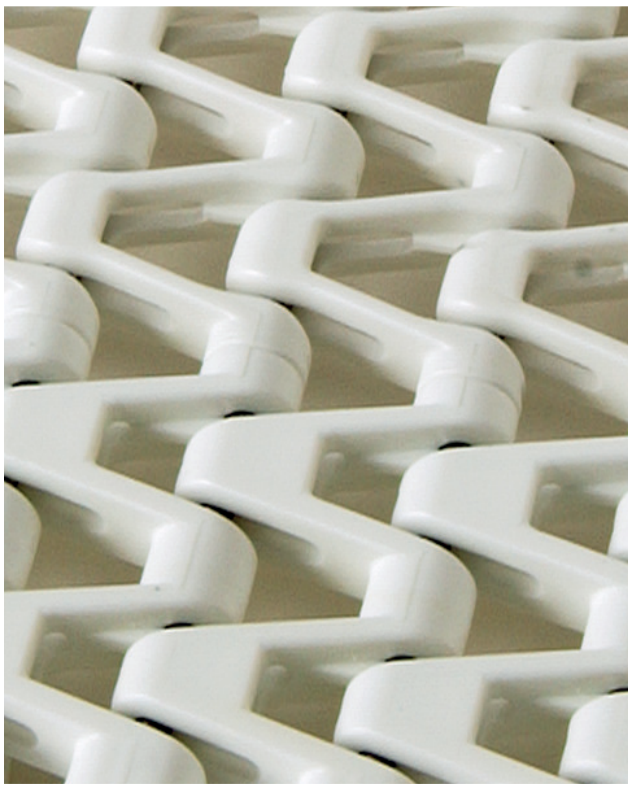
Widths:

**95.6mm - 1205.6mm
(3.76" - 47.46")**

Light and economical chain for many of your standard applications. SuperTight is a lighter version of the MultiSpan and offers the tightest turning radius of all of our chains. If you're looking for a smaller horizontal turning radius, this could be the solution for you. Despite a lighter weight, SuperTight chain lives up to the standard strength inherent to all our chains. It is also often the most economical chain option.

TO LEARN MORE VISIT

spantechconveyors.com/product/supertight



SUPER TIGHT





Suggested Industries:

(Not limited to)

**Food & Beverage Production,
Distribution, Packaging & E-Commerce**

Applications:

Low Cost, Tight Turns

Pitch:

50mm

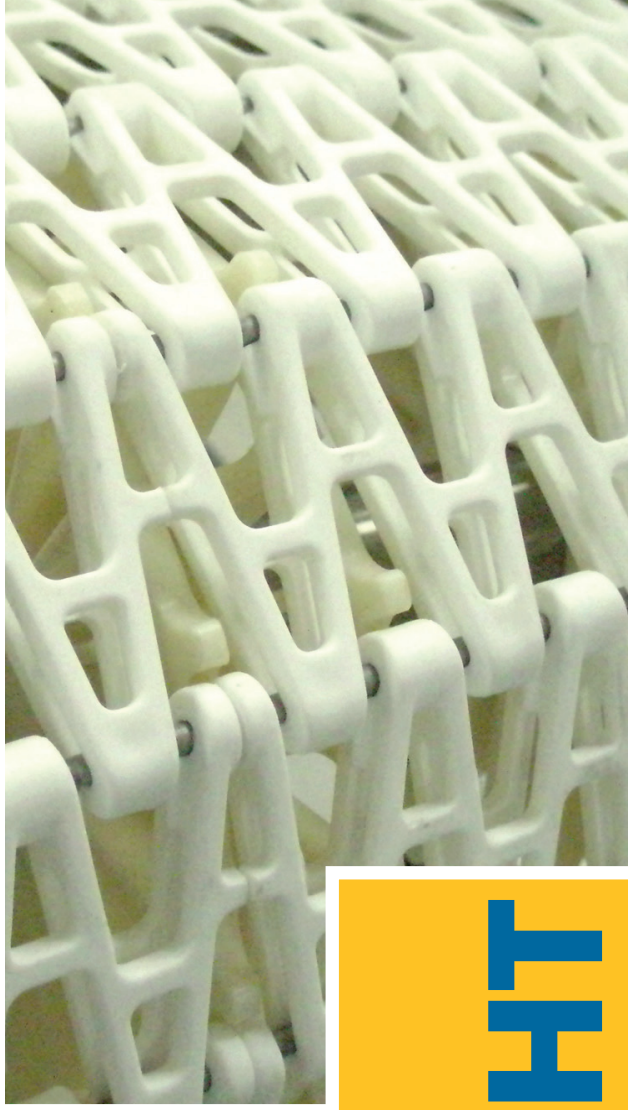
Widths:

**95.6mm - 1205.6mm
(3.76" - 47.46")**

50mm SuperTight chain is a perfect solution for applications where a low cost and high-performance conveyor is needed. Because the pitch of this chain is twice our other chains, the same length conveyor uses half the number of chain rows! It weighs less, yet is just as strong as standard SuperTight chain. Additionally, 50mm SuperTight chain has one of the lowest turning radii in the industry. Its open design allows for good air flow to your product, which is perfect for cooling or drying applications.

TO LEARN MORE VISIT

spantechconveyors.com/product/50mm-supertight



50 MM
SUPERTIGHT



Pillow Top chain conveyors handle the most delicate of products with ease and precision while offering a very tight turning radius for the chain width. It is a perfect application for food production facilities. The innovative Pillow Top design eliminates the need for a powered transfer unit and allows the conveyor to sit as close to the transfer unit as possible. This results in successful transferring of very small products which could otherwise get caught or snagged in more traditional transfers.

PILLOW TOP

Suggested Industries:

(Not limited to)

Food Production

Applications:

Thin Product Transfers, Tight Turns

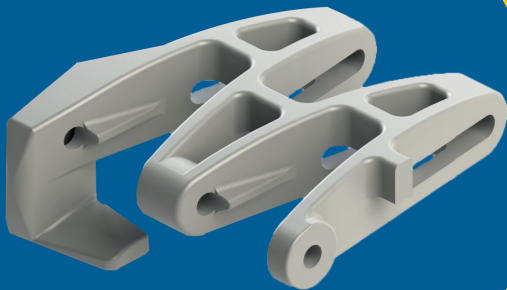
Pitch:

50mm

Widths:

95.6mm - 1205.6mm

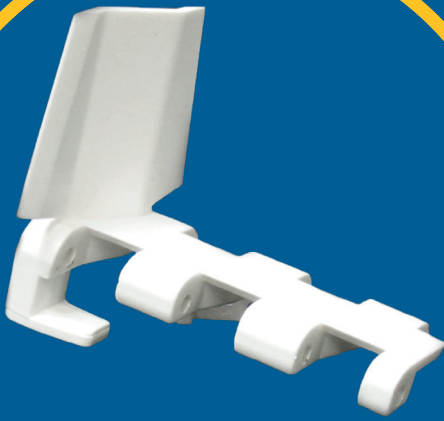
(3.76" - 47.46")



TO LEARN MORE VISIT
spantechconveyors.com/product/pillowtop

CLOSED TOP





Suggested Industries:

(Not limited to)

**Pharmaceuticals, Packaging
& Cosmetics**

Applications:

Bulk Product

Pitch:

25mm

Widths:

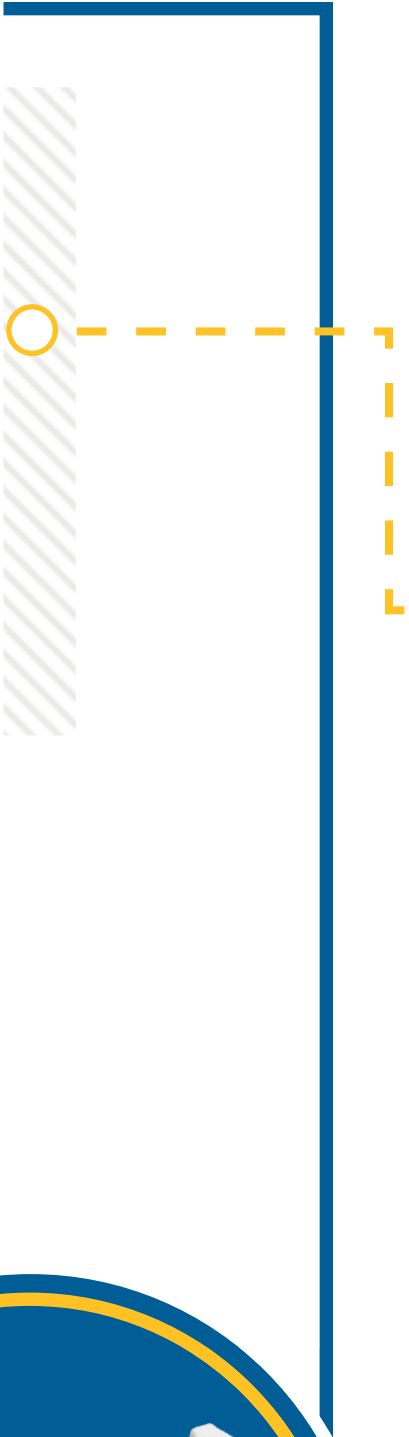
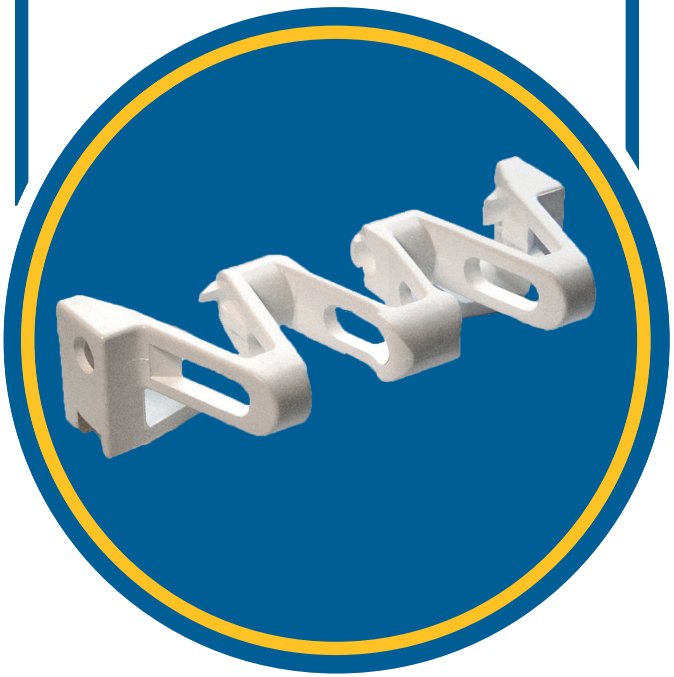
**95.6mm - 1205.6mm
(3.76" - 47.46")**

Sometimes you need a conveyor chain with a smooth, closed carrying surface. With no open areas, Closed Top chain adds a measure of safety perfect for operator stations. Closed Top chain has an internal roller which results in extremely low running friction. This means you have the option of creating extra long conveyors of 100' or more. Closed Top conveyors are straight running only, but can carry heavier products due to it's robust design.

TO LEARN MORE VISIT

spantechconveyors.com/product/closed-top

MONOSPAN



MonoSpan is the ideal narrow track system solution for packaging and product handling when products are small. When you need to move products that could fit in your hand in both packaging and product handling applications, MonoSpan is the chain you're looking for. Our MonoSpan chain has a 51 percent open design, which means it is easy to keep clean. The chain can even be washed down while on the conveyor. MonoSpan chain is durable, stain-resistant and its flexible design can accommodate multiple curves and elevation changes. The plastic chain design makes it perfect for metal detectors.

Suggested Industries:

(Not limited to)

**Food Production, Manufacturing
& Pharmaceuticals**

Applications:

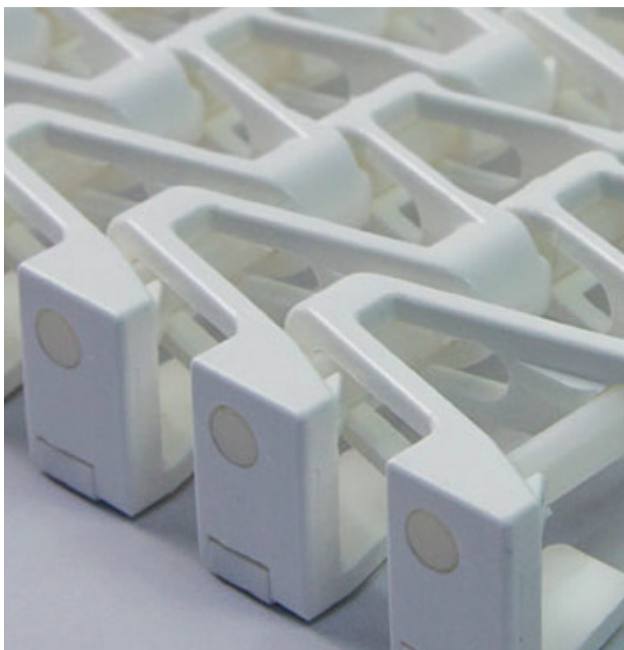
Metal Detectors

Pitch:

25mm

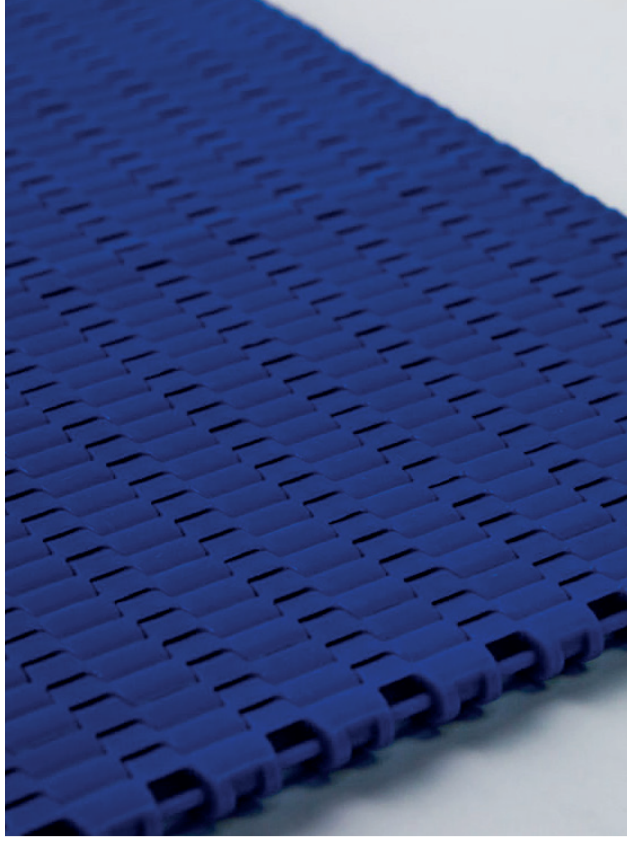
Widths:

**95.6mm (fixed)
(3.76")**



TO LEARN MORE VISIT
spantechconveyors.com/product/monospan

MICROSPAN



MicroSpan modular chain is designed to replace belt conveyor systems. Repairs can easily and quickly be made without all the hassle and cost of replacing or fixing a belt on a conveyor. End-to-end product movement has never been more adaptable than with MicroSpan chain components and transfers. Full conveyors can also be made with MicroSpan chain to handle practically any product. Because it can turn over a 6mm nose bar, we can obtain extremely close transfers for very small products.

Suggested Industries:

(Not limited to)

**Pharmaceuticals, Distribution,
Cosmetics, Packaging, & E-Commerce**

Applications:

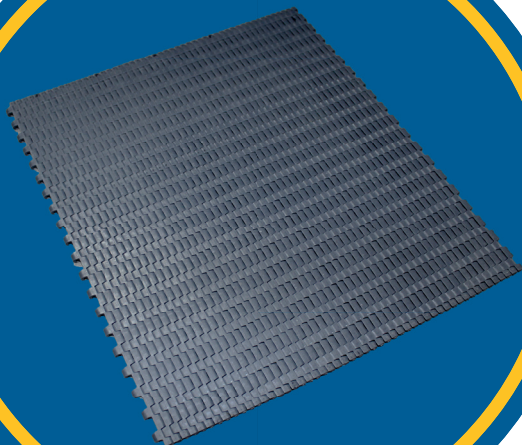
Small Product Transfers

Pitch:

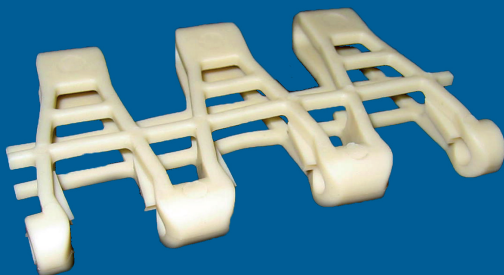
5mm

Widths:

**95.6mm - 1205.6mm
(3.76" - 47.46")**



TO LEARN MORE VISIT
spantechconveyors.com/product/microspan



Suggested Industries:

(Not limited to)

Food & Beverage Production

Applications:

Cooling, Metal Detectors

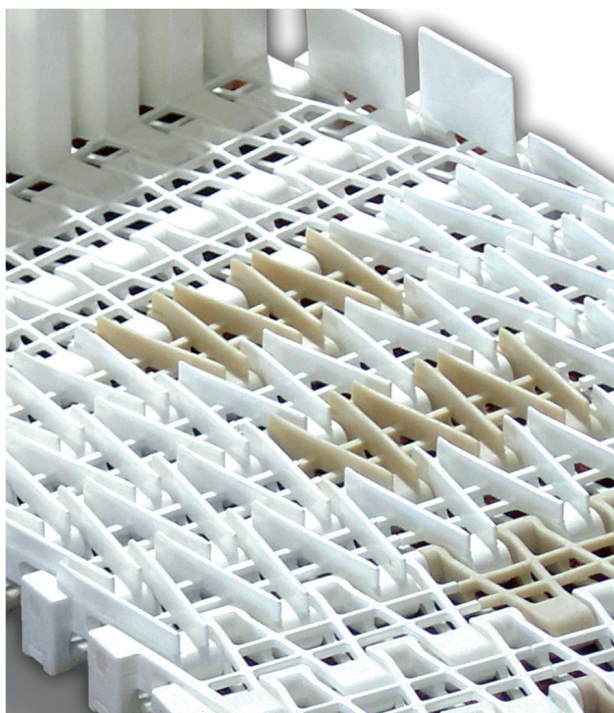
Pitch:

50mm

Widths:

209.2mm - 1209.2mm

(8.24" - 47.61")



TO LEARN MORE VISIT
spantechconveyors.com/product/maxispan

MaxiSpan chain is a top choice for its product cooling capabilities. It has a 75 percent open design allowing liquids and debris to fall through the chain, meaning there is less downtime due to conveyor cleaning. MaxiSpan's open design also equals cost savings, due to reduced material use. Horizontal curves, inclines, declines and straight sections are all possible in one continuous conveyor, often eliminating the need for transfers. Plus the modular design allows for individual sections of the chain to be opened, so service and maintenance are a snap. The all-plastic design also makes it a great choice for running through metal detectors.

MAXISPAN

The ideal choice to move your small products with care on a single conveyor. MiniLink conveyors can handle the most delicate products such as pre-cooked finger foods, cookies and crackers. Plus the compact cross section means it can fit easily into processing and packaging equipment where other conveyors can't. MiniLink can be configured to create vertical or horizontal curves, making directional changes possible on one conveyor.

Suggested Industries:

(Not limited to)

Pharmaceuticals

Applications:

Machinery Integration

Pitch:

25mm

Widths:

30mm -or- 60mm

(1.18" - 2.36")



TO LEARN MORE VISIT

spantechconveyors.com/product/minilink

MINILINK



J-TRAX



Suggested Industries:

(Not limited to)

Food & Beverage Production

Applications:

Cooling

Pitch:

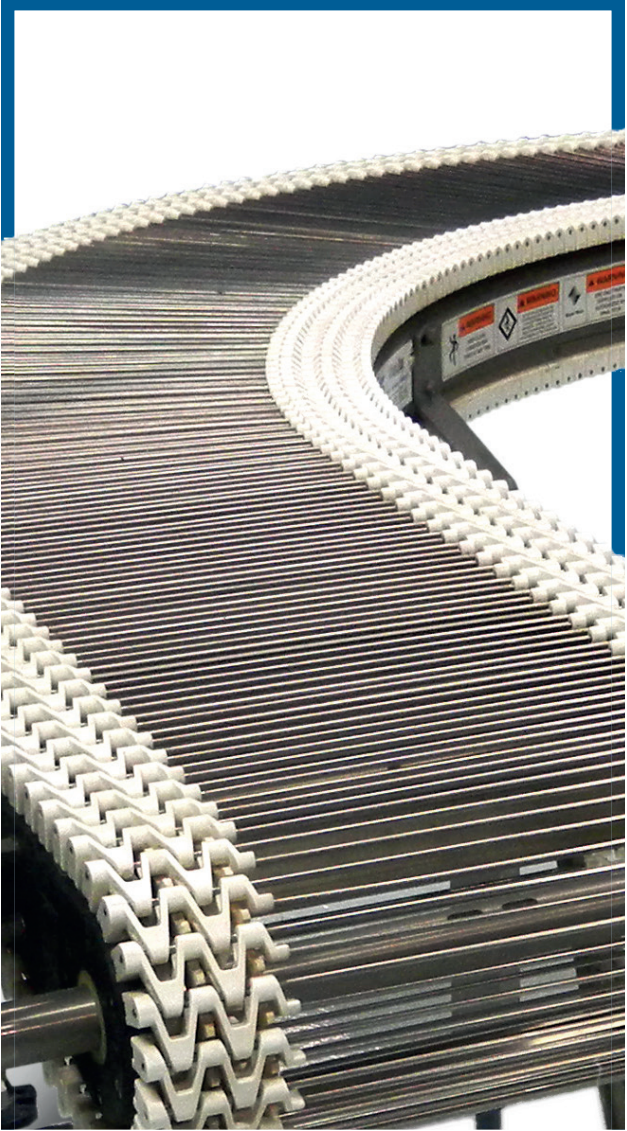
25mm

Widths:

95.6mm - 605.5mm
(3.76" - 23.84")



TO LEARN MORE VISIT
spantechconveyors.com/product/j-trax



— The smarter way to move and cool food products. The J-Trax system adds efficiency to the food and beverage industry which comes with its own unique set of challenges. J-Trax is easy to install and ideal for any family of food products. The functional design and no wire-to-wire friction allows for a chain type with greater durability and endless applications.

At Span Tech we strive for unrivaled innovation in everything we do. Our goal is to revolutionaize the conveyor industry one link at a time.

OUTLAST.
OUTPERFORM.
OUTDELIVER.

CONOVEY